

Product datasheet for **AM31105PU-N**

PHGDH Mouse Monoclonal Antibody [Clone ID: 4A3-1D6]

Product data:

Product Type:	Primary Antibodies
Clone Name:	4A3-1D6
Applications:	ELISA, IF, IHC, IP, WB
Recommended Dilution:	ELISA. Immunofluorescence: 1 - 10 µg/ml. Immunohistochemistry on Paraffin Sections: 5 µg/ml. Immunoprecipitation. Western Blot.
Reactivity:	Human
Host:	Mouse
Isotype:	IgG1
Clonality:	Monoclonal
Immunogen:	PHGDH antibody was raised against recombinant protein
Specificity:	This antibody reacts to PHGDH.
Formulation:	PBS, pH 7.2 State: Purified State: Liquid purified Ig fraction
Concentration:	lot specific
Purification:	Affinity chromatography on Protein A
Conjugation:	Unconjugated
Storage:	Store the antibody undiluted at 2-8°C for one month or (in aliquots) at -20°C for longer. Avoid repeated freezing and thawing.
Stability:	Shelf life: one year from despatch.
Gene Name:	phosphoglycerate dehydrogenase
Database Link:	Entrez Gene 26227 Human O43175
Synonyms:	PGDH3, 3-PGDH

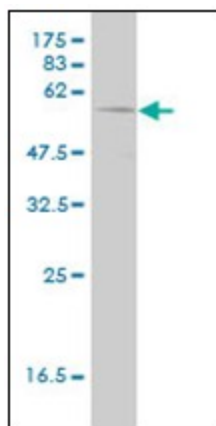


[View online »](#)

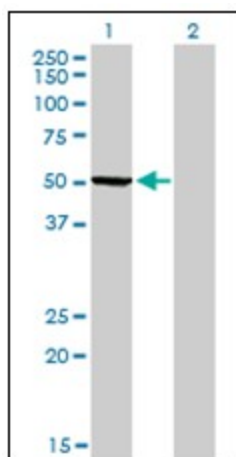
Protein Families: Druggable Genome, Stem cell - Pluripotency

Protein Pathways: Glycine, serine and threonine metabolism, Metabolic pathways

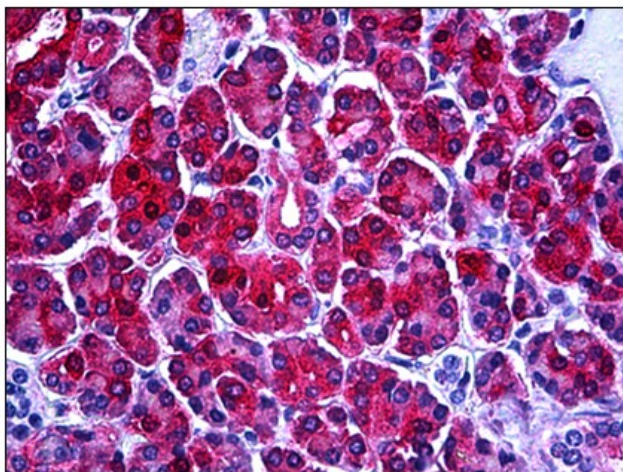
Product images:



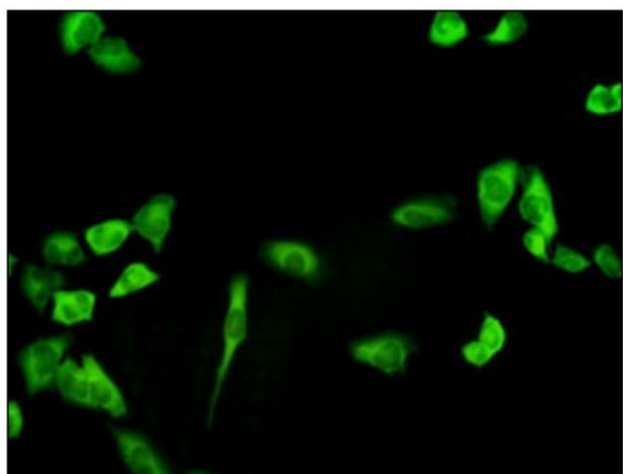
Western Blot analysis of PHGDH expression in human liver with PHGDH monoclonal antibody, clone 4A3-1D6.



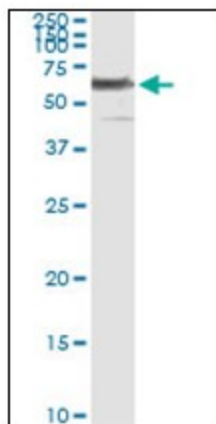
Western Blot analysis of PHGDH expression in transfected 293T cell line by PHGDH monoclonal antibody, clone 4A3-1D6.



Human Pancreas: Formalin-Fixed, Paraffin-Embedded (FFPE)



Immunofluorescence of monoclonal antibody to PHGDH on HeLa cell. [antibody concentration 1 ~ 10 ug/ml]



Immunoprecipitation of PHGDH transfected lysate using anti-PHGDH monoclonal antibody and Protein A Magnetic Bead.