

Product datasheet for **AM31101PU-N**

SMAD2 (181-280) Mouse Monoclonal Antibody [Clone ID: 3G6]

Product data:

Product Type:	Primary Antibodies
Clone Name:	3G6
Applications:	ELISA, IHC, WB
Recommended Dilution:	ELISA. Immunohistochemistry on Paraffin Sections: 5 µg/ml. Western Blot.
Reactivity:	Human
Host:	Mouse
Isotype:	IgG2b
Clonality:	Monoclonal
Immunogen:	SMAD2 antibody was raised against sMAD2 (181 a.a. ~ 280 a.a) partial recombinant protein with GST tag. MW of the GST tag alone is 26 KDa.
Specificity:	This antibody detects SMAD2 at aa 181-280.
Formulation:	PBS, pH 7.4 State: Purified State: Liquid purified Ig fraction
Concentration:	lot specific
Purification:	Affinity chromatography on Protein A
Conjugation:	Unconjugated
Storage:	Store the antibody undiluted at 2-8°C for one month or (in aliquots) at -20°C for longer. Avoid repeated freezing and thawing.
Stability:	Shelf life: one year from despatch.
Gene Name:	SMAD family member 2
Database Link:	Entrez Gene 4087 Human Q15796
Synonyms:	SMAD family member 2, SMAD-2, SMAD 2, MADH2, MAD homolog 2, MADR2, Mad-related protein 2, JV18-1

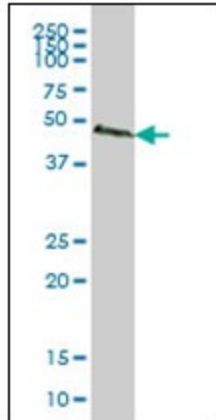


[View online »](#)

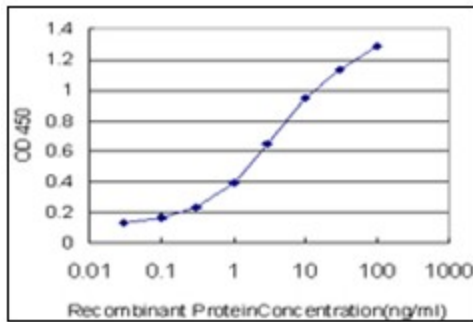
Protein Families: Cancer stem cells, Druggable Genome, Embryonic stem cells, ES Cell Differentiation/IPS, Stem cell relevant signaling - JAK/STAT signaling pathway, Stem cell relevant signaling - TGFb/BMP signaling pathway, Transcription Factors

Protein Pathways: Adherens junction, Cell cycle, Colorectal cancer, Pancreatic cancer, Pathways in cancer, TGF-beta signaling pathway, Wnt signaling pathway

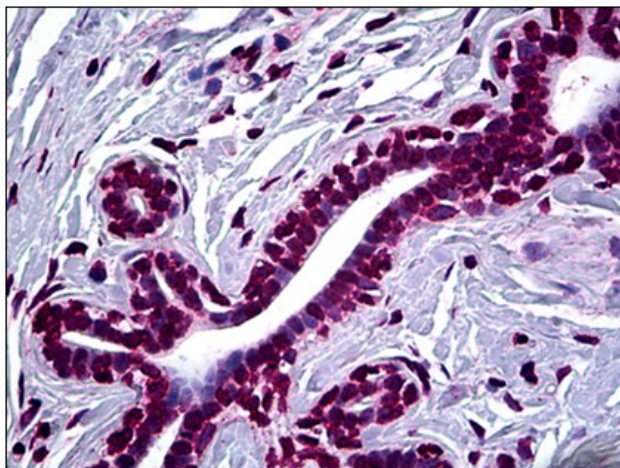
Product images:



SMAD2 monoclonal antibody clone 3G6 Western Blot analysis of SMAD2 expression in A-431.



Detection limit for recombinant GST tagged SMAD2 is approximately 0.1ng/ml as a capture antibody.



Human Breast: Formalin-Fixed, Paraffin-Embedded (FFPE)