

Product datasheet for **AM31099PU-N**

SMAD3 Mouse Monoclonal Antibody [Clone ID: 2C12]

Product data:

Product Type:	Primary Antibodies
Clone Name:	2C12
Applications:	ELISA, IHC, WB
Recommended Dilution:	ELISA. Immunohistochemistry on Paraffin Sections: 5 µg/ml. Western Blot.
Reactivity:	Human
Host:	Mouse
Isotype:	IgG2a
Clonality:	Monoclonal
Immunogen:	SMAD3 antibody was raised against recombinant protein
Specificity:	This antibody reacts to SMAD3.
Formulation:	PBS, pH 7.2 State: Purified State: Liquid purified Ig fraction
Concentration:	lot specific
Purification:	Protein A chromatography
Conjugation:	Unconjugated
Storage:	Store the antibody undiluted at 2-8°C for one month or (in aliquots) at -20°C for longer. Avoid repeated freezing and thawing.
Stability:	Shelf life: one year from despatch.
Gene Name:	SMAD family member 3
Database Link:	Entrez Gene 4088 Human P84022



[View online »](#)

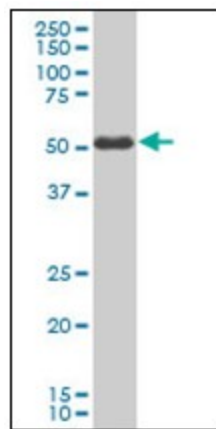
Background: SMAD3, a transcriptional regulator, is activated by TGF-beta and Activin 1 receptor kinase. SMAD3 recognizes an 8 bp palindromic sequence GTCTAGAC. Upon phosphorylation at two extreme C-terminal serines, SMAD3 is translocated into the nucleus where it forms complexes with other SMAD proteins, depending on the activation pathway, and regulates the transcription of target genes.

Synonyms: SMAD family member 3, SMAD 3, SMAD-3, Mad3, MAD-3, MADH3, MAD homolog 3, JV15-2

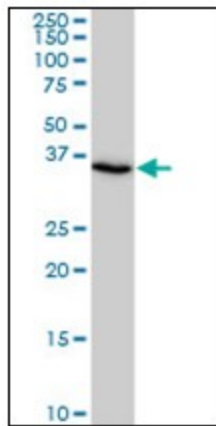
Protein Families: Cancer stem cells, Druggable Genome, Embryonic stem cells, ES Cell Differentiation/IPS, Stem cell relevant signaling - JAK/STAT signaling pathway, Stem cell relevant signaling - TGFb/BMP signaling pathway, Transcription Factors

Protein Pathways: Adherens junction, Cell cycle, Chronic myeloid leukemia, Colorectal cancer, Pancreatic cancer, Pathways in cancer, TGF-beta signaling pathway, Wnt signaling pathway

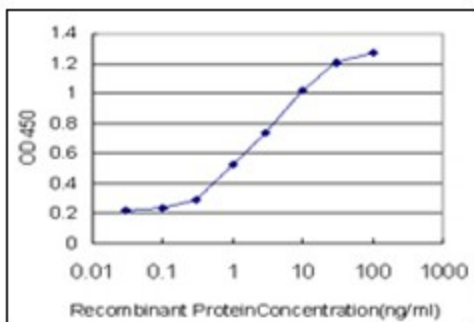
Product images:



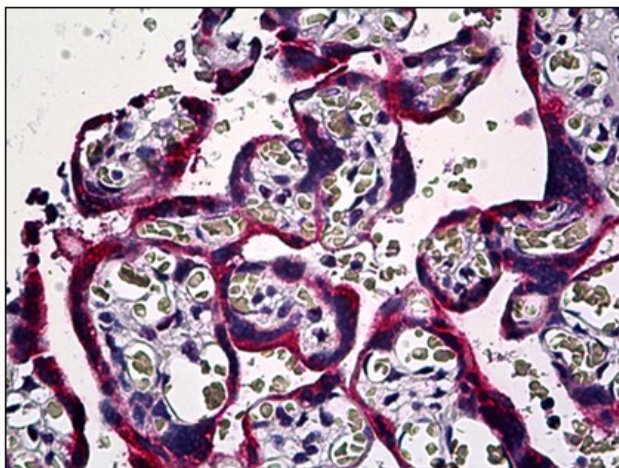
SMAD3 monoclonal antibody clone 2C12.
Western Blot analysis of SMAD3 expression in human colon.



SMAD3 monoclonal antibody clone 2C12.
Western Blot analysis of SMAD3 expression in U-2 OS.



Detection limit for recombinant GST tagged SMAD3 is approximately 0.03ng/ml as a capture antibody.



Human Placenta: Formalin-Fixed, Paraffin-Embedded (FFPE)