

Product datasheet for **AM31098PU-N**

Protein Kinase D2 (PRKD2) Mouse Monoclonal Antibody [Clone ID: 2E4]

Product data:

| | |
|-----------------------|--|
| Product Type: | Primary Antibodies |
| Clone Name: | 2E4 |
| Applications: | ELISA, IHC, WB |
| Recommended Dilution: | ELISA. Immunohistochemistry on Paraffin Sections: 10 µg/ml. Western Blot. |
| Reactivity: | Human |
| Host: | Mouse |
| Isotype: | IgG2b |
| Clonality: | Monoclonal |
| Immunogen: | PRKD2 antibody was raised against recombinant protein |
| Specificity: | This antibody reacts to PRKD2. |
| Formulation: | PBS, pH 7.2 State: Purified State: Liquid purified Ig fraction |
| Concentration: | lot specific |
| Purification: | Protein A chromatography |
| Conjugation: | Unconjugated |
| Storage: | Store the antibody undiluted at 2-8°C for one month or (in aliquots) at -20°C for longer. Avoid repeated freezing and thawing. |
| Stability: | Shelf life: one year from despatch. |
| Gene Name: | protein kinase D2 |
| Database Link: | Entrez Gene 25865 Human Q9BZL6 |
| Background: | PKD2, a PKD type protein kinase, contains a N-terminal hydrophobic domain predicted to be a transmembrane region, two cysteine-rich motifs that form zinc finger-like repeats, a pleckstrin homology domain, and a putative kinase domain containing the ATP-binding consensus sequence. |

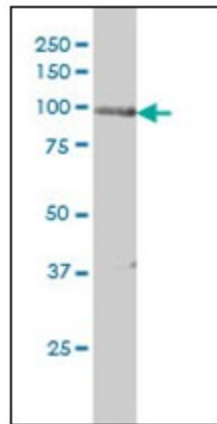


[View online »](#)

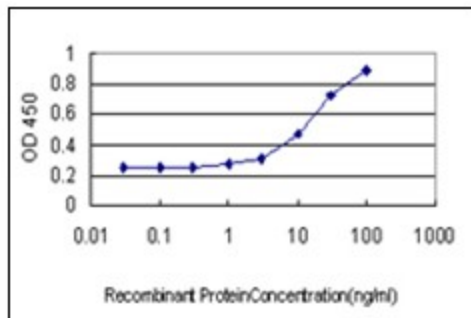
Synonyms: PKC-D2, nPKC-D2, HSPC187

Protein Families: Druggable Genome, Protein Kinase

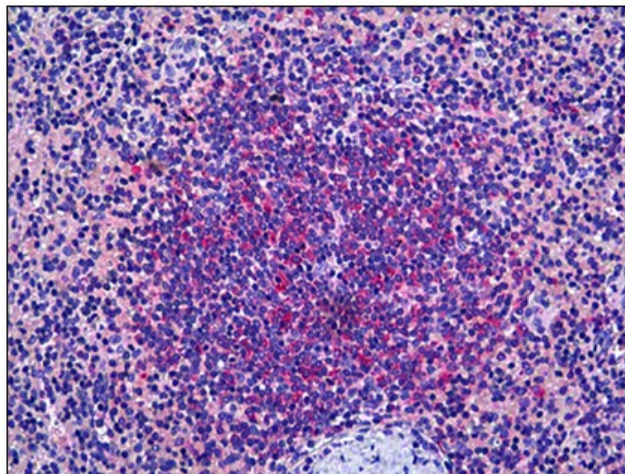
Product images:



Western Blot analysis of PRKD2 expression in HeLa cells with PRKD2 monoclonal antibody, clone 2E4.



Detection limit for recombinant GST tagged PRKD2 is approximately 1 ng/ml as a capture antibody.



Human Spleen: Formalin-Fixed, Paraffin-Embedded (FFPE)