

Product datasheet for **AM31094PU-N**

ALDH1L1 Mouse Monoclonal Antibody [Clone ID: 3E9]

Product data:

Product Type:	Primary Antibodies
Clone Name:	3E9
Applications:	ELISA, IF, IHC, WB
Recommended Dilution:	ELISA. Immunofluorescence: 10 µg/ml. Immunohistochemistry on Paraffin Sections: 5 µg/ml. Western Blot.
Reactivity:	Human, Mouse
Host:	Mouse
Isotype:	IgG3
Clonality:	Monoclonal
Immunogen:	ALDH1L1 (NP_036322, 803 a.a. ~ 903 a.a) partial recombinant protein with GST tag. MW of the GST tag alone is 26 KDa.
Specificity:	This antibody reacts to ALDH1L1.
Formulation:	PBS, pH 7.4 State: Purified State: Liquid purified Ig fraction
Concentration:	lot specific
Purification:	Protein A Chromatography
Conjugation:	Unconjugated
Storage:	Store undiluted at 2-8°C for one month or (in aliquots) at -20°C for longer. Avoid repeated freezing and thawing.
Stability:	Shelf life: one year from despatch.
Gene Name:	aldehyde dehydrogenase 1 family member L1
Database Link:	Entrez Gene 10840 Human O75891
Synonyms:	10-formyltetrahydrofolate dehydrogenase

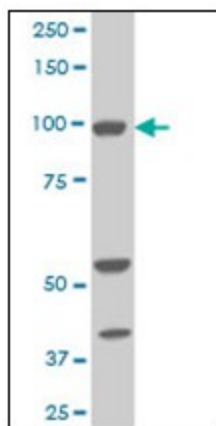


[View online »](#)

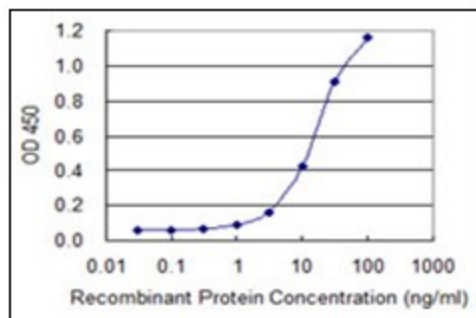
Protein Families: Druggable Genome

Protein Pathways: One carbon pool by folate

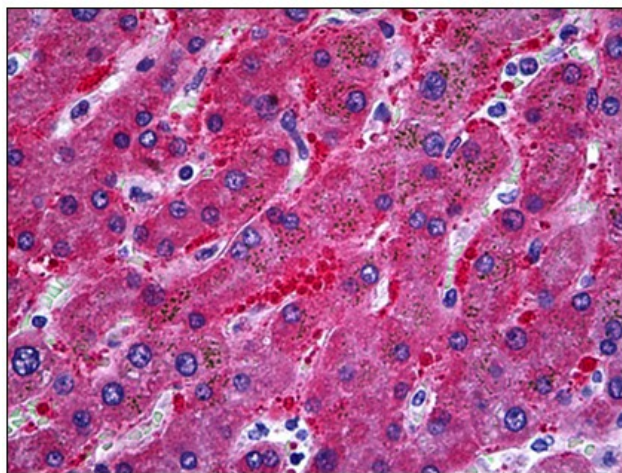
Product images:



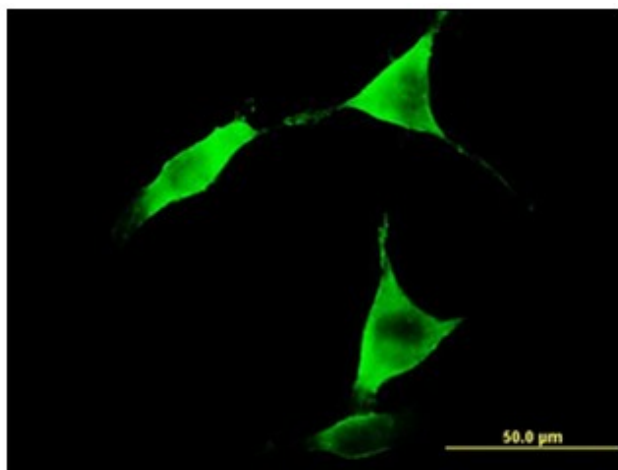
Western Blot analysis of ALDH1L1 expression in NIH/3T3 cells with ALDH1L1 monoclonal antibody, clone 3E9.



Detection limit for recombinant GST tagged ALDH1L1 is 0.3 ng/ml as a capture antibody.



Human Liver: Formalin-Fixed, Paraffin-Embedded (FFPE)



Immunofluorescence of monoclonal antibody to ALDH1L1 on NIH/3T3 cell. [antibody concentration 10 ug/ml]