

## Product datasheet for **AM31091PU-N**

### SA2 (STAG2) Mouse Monoclonal Antibody [Clone ID: 3C6]

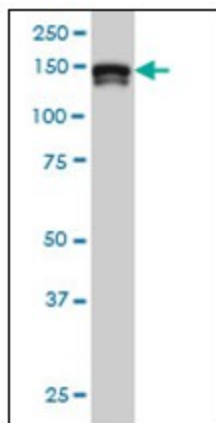
#### Product data:

Product Type:	Primary Antibodies
Clone Name:	3C6
Applications:	ELISA, IF, IHC, WB
Recommended Dilution:	<b>ELISA.</b> <b>Immunofluorescence:</b> 10 µg/ml. <b>Immunohistochemistry on Paraffin Sections:</b> 5 µg/ml. <b>Western Blot.</b>
Reactivity:	Human, Mouse
Host:	Mouse
Isotype:	IgG1
Clonality:	Monoclonal
Immunogen:	STAG2 antibody was raised against recombinant protein
Specificity:	This antibody reacts to STAG2.
Formulation:	PBS, pH 7.2 State: Purified State: Liquid purified Ig fraction
Concentration:	lot specific
Purification:	Protein A chromatography
Conjugation:	Unconjugated
Storage:	Store the antibody undiluted at 2-8°C for one month or (in aliquots) at -20°C for longer. Avoid repeated freezing and thawing.
Stability:	Shelf life: one year from despatch.
Gene Name:	stromal antigen 2
Database Link:	<a href="#">Entrez Gene 20843 Mouse</a> <a href="#">Entrez Gene 10735 Human</a> <a href="#">Q8N3U4</a>
Synonyms:	SA2, SCC3 homolog 2
Protein Pathways:	Cell cycle

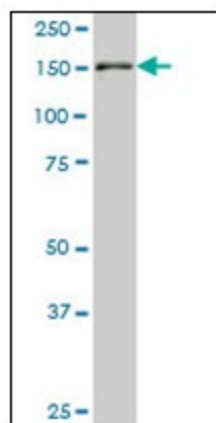


[View online »](#)

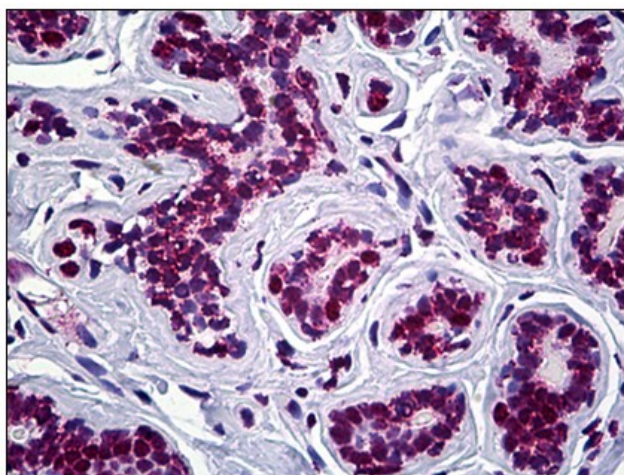
## Product images:



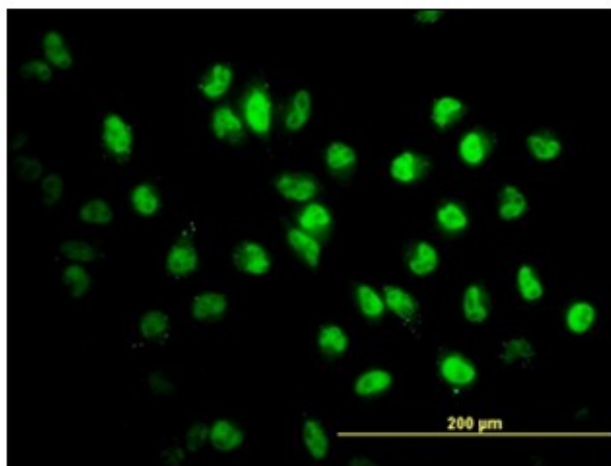
Western Blot analysis of STAG2 expression in HeLa nuclear extract with STAG2 monoclonal antibody, clone 3C6.



Western Blot analysis of STAG2 expression in NIH/3T3 cells with STAG2 monoclonal antibody, clone 3C6.



Human Breast: Formalin-Fixed, Paraffin-Embedded (FFPE)



Immunofluorescence of monoclonal antibody to STAG2 on HeLa cell. [antibody concentration 10 ug/ml]