

Product datasheet for **AM31090PU-N**

SA1 (STAG1) (1112-1221) Mouse Monoclonal Antibody [Clone ID: 2E9]

Product data:

Product Type:	Primary Antibodies
Clone Name:	2E9
Applications:	ELISA, IF, IHC, WB
Recommended Dilution:	ELISA. Immunofluorescence: 10 µg/ml. Immunohistochemistry on Paraffin Sections: 5 µg/ml. Western Blot: 1/500 - 1/1000.
Reactivity:	Human
Host:	Mouse
Isotype:	IgG2b
Clonality:	Monoclonal
Immunogen:	sTAG1 (AAH64699, 1112 a.a. ~ 1221 a.a) partial recombinant protein with GST tag. MW of the GST tag alone is 26 KDa.
Specificity:	This antibody reacts to STAG1 at aa 1112 ~ 1221.
Formulation:	PBS, pH 7.4 State: Purified State: Liquid purified Ig fraction
Concentration:	lot specific
Purification:	Protein A chromatography
Conjugation:	Unconjugated
Storage:	Store the antibody undiluted at 2-8°C for one month or (in aliquots) at -20°C for longer. Avoid repeated freezing and thawing.
Stability:	Shelf life: one year from despatch.
Gene Name:	stromal antigen 1
Database Link:	Entrez Gene 10274 Human Q8WVM7
Synonyms:	SA1, SCC3 homolog 1

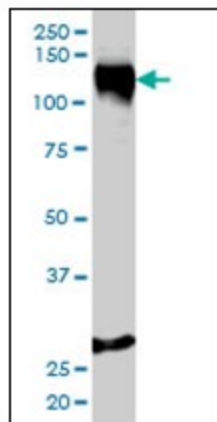


[View online »](#)

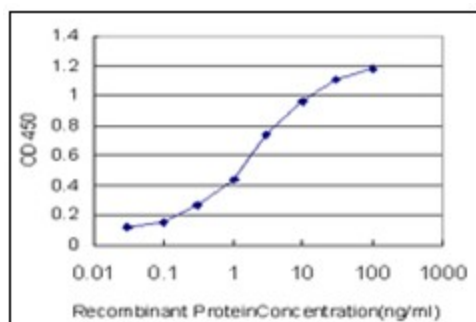
Protein Families: Druggable Genome

Protein Pathways: Cell cycle

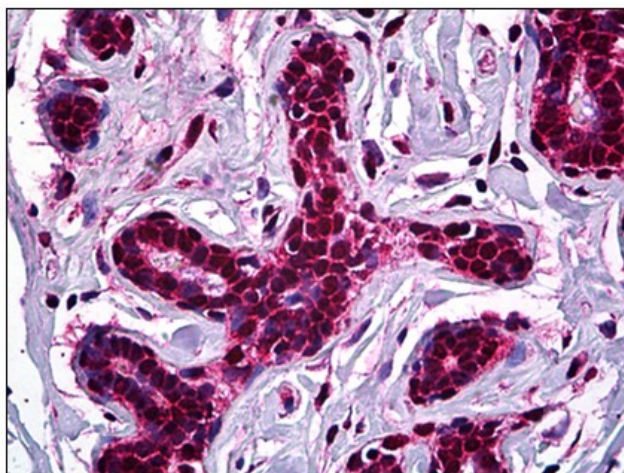
Product images:



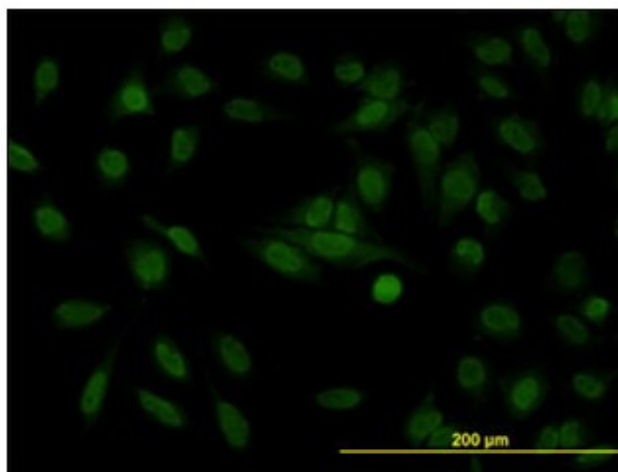
Western Blot analysis of STAG1 expression in HeLa cells with STAG1 monoclonal antibody, clone 2E9.



Detection limit for recombinant GST tagged STAG1 is approximately 0.03ng/ml as a capture antibody.



Human Breast: Formalin-Fixed, Paraffin-Embedded (FFPE)



Immunofluorescence of monoclonal antibody to STAG1 on HeLa cell. [antibody concentration 10 ug/ml]