

Product datasheet for **AM31089PU-N**

Sprouty 1 (SPRY1) (1-111) Mouse Monoclonal Antibody [Clone ID: 3H4]

Product data:

Product Type:	Primary Antibodies
Clone Name:	3H4
Applications:	ELISA, IHC, WB
Recommended Dilution:	ELISA. Immunohistochemistry on Paraffin Sections: 5 µg/ml. Western Blot: 1/500 - 1/1000.
Reactivity:	Human
Host:	Mouse
Isotype:	IgG2a
Clonality:	Monoclonal
Immunogen:	SPRY1 (NP_005832, 1 a.a. ~ 111 a.a) partial recombinant protein with GST tag
Specificity:	This antibody reacts to SPRY1 at 1-111.
Formulation:	PBS, pH 7.4 State: Purified State: Liquid purified Ig fraction
Concentration:	lot specific
Purification:	Protein A chromatography
Conjugation:	Unconjugated
Storage:	Store the antibody undiluted at 2-8°C for one month or (in aliquots) at -20°C for longer. Avoid repeated freezing and thawing.
Stability:	Shelf life: one year from despatch.
Gene Name:	sprouty RTK signaling antagonist 1
Database Link:	Entrez Gene 10252 Human O43609
Background:	May function as an antagonist of fibroblast growth factor (FGF) pathways and may negatively modulate respiratory organogenesis.
Synonyms:	Spry-1, Sprouty 1

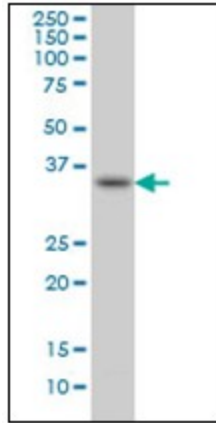


[View online »](#)

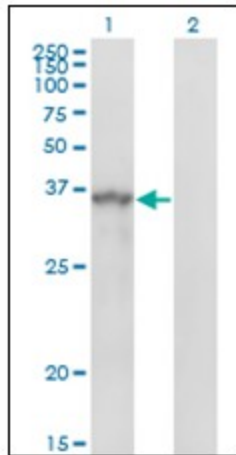
Protein Families: Druggable Genome

Protein Pathways: Jak-STAT signaling pathway

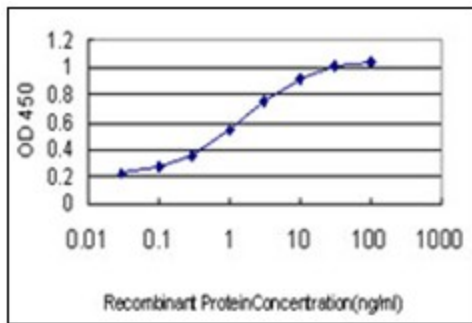
Product images:



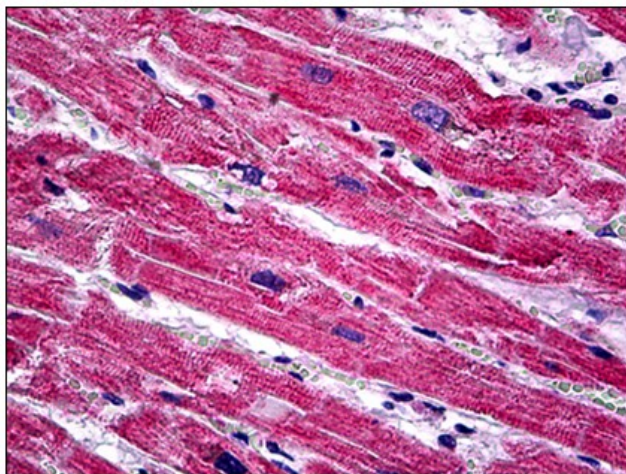
SPRY1 monoclonal antibody, clone 3H4. Western Blot analysis of SPRY1 expression in HepG2.



Western Blot analysis of SPRY1 expression in transfected 293T cell line by SPRY1 monoclonal antibody, clone 3H4.



Detection limit for recombinant GST tagged SPRY1 is approximately 0.03ng/ml as a capture antibody.



Human Heart: Formalin-Fixed, Paraffin-Embedded (FFPE)