

Product datasheet for **AM31087PU-N**

MNK1 (MKNK1) Mouse Monoclonal Antibody [Clone ID: 2F12]

Product data:

| | |
|-----------------------|--|
| Product Type: | Primary Antibodies |
| Clone Name: | 2F12 |
| Applications: | ELISA, IF, IHC, WB |
| Recommended Dilution: | ELISA. Immunofluorescence: 10 µg/ml. Immunohistochemistry on Paraffin Sections: 5 µg/ml. Western Blot: 1/500 - 1/1000. |
| Reactivity: | Human, Mouse |
| Host: | Mouse |
| Isotype: | IgG2a |
| Clonality: | Monoclonal |
| Immunogen: | MKNK1 antibody was raised against recombinant protein |
| Specificity: | This antibody reacts to MKNK1 / MNK1. |
| Formulation: | PBS, pH 7.2 State: Purified State: Liquid purified Ig fraction |
| Concentration: | lot specific |
| Purification: | Protein A chromatography |
| Conjugation: | Unconjugated |
| Storage: | Store the antibody undiluted at 2-8°C for one month or (in aliquots) at -20°C for longer. Avoid repeated freezing and thawing. |
| Stability: | Shelf life: one year from despatch. |
| Gene Name: | MAP kinase interacting serine/threonine kinase 1 |
| Database Link: | Entrez Gene 17346 Mouse Entrez Gene 8569 Human Q9BUB5 |
| Background: | MNK1 is an MNK protein kinase that is activated in response to mitogens/insulin by ERK1 and ERK2, or in response to stress by activated p38. MNK1 phosphorylates eIF4E to enhance the translation rates of cap-containing mRNAs. |



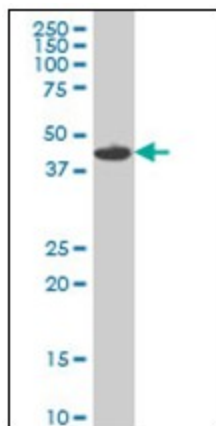
[View online »](#)

Synonyms: MNK1, MAP kinase-interacting serine/threonine-protein kinase 1

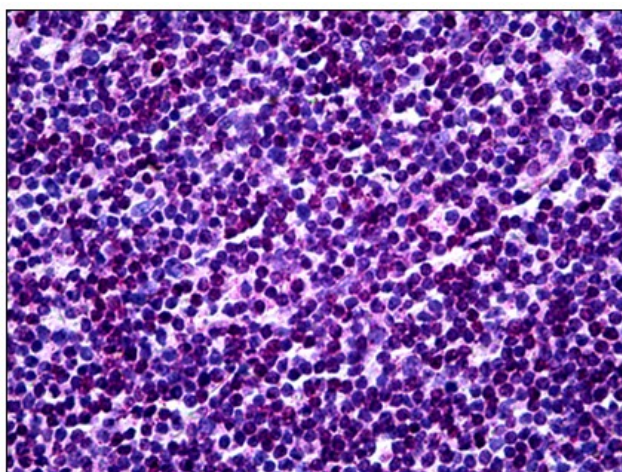
Protein Families: Druggable Genome, Protein Kinase

Protein Pathways: Insulin signaling pathway, MAPK signaling pathway

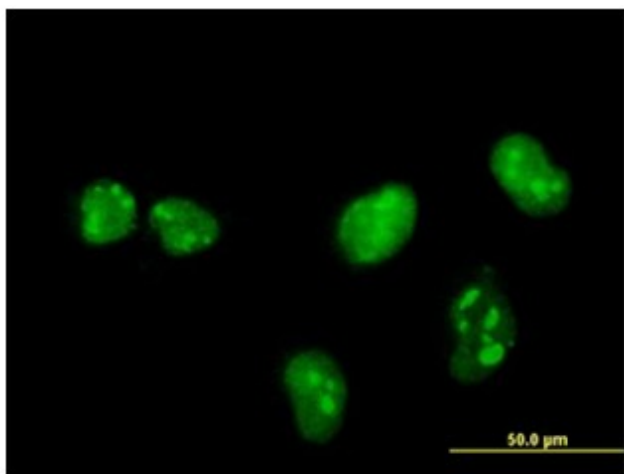
Product images:



MNK1 monoclonal antibody, clone 2F12. Western Blot analysis of MNK1 expression in Raw 264.7. (Isoform : 51.342, 47.402, 39.103 kD)



Human Tonsil: Formalin-Fixed, Paraffin-Embedded (FFPE)



Immunofluorescence of monoclonal antibody to MNK1 on HeLa cell. [antibody concentration 10 ug/ml]