

Product datasheet for **AM31081PU-N**

FKLF / KLF11 (KLF11) Mouse Monoclonal Antibody [Clone ID: 10D8]

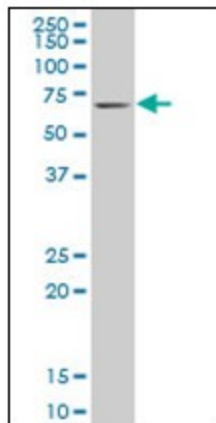
Product data:

Product Type:	Primary Antibodies
Clone Name:	10D8
Applications:	ELISA, IF, IHC, WB
Recommended Dilution:	ELISA. Immunofluorescence: 10 µg/ml. Immunohistochemistry on Paraffin Sections: 10 µg/ml. Western Blot.
Reactivity:	Human, Mouse
Host:	Mouse
Isotype:	IgG2a
Clonality:	Monoclonal
Immunogen:	KLF11 antibody was raised against recombinant protein
Specificity:	This antibody reacts to KLF11.
Formulation:	PBS, pH 7.2 State: Purified State: Liquid purified Ig fraction
Concentration:	lot specific
Purification:	Protein A chromatography
Conjugation:	Unconjugated
Storage:	Store the antibody undiluted at 2-8°C for one month or (in aliquots) at -20°C for longer. Avoid repeated freezing and thawing.
Stability:	Shelf life: one year from despatch.
Gene Name:	Kruppel-like factor 11
Database Link:	Entrez Gene 194655 Mouse Entrez Gene 8462 Human Q14901
Synonyms:	Krueppel-like factor 11, TIEG-2, FKLF
Protein Families:	Transcription Factors

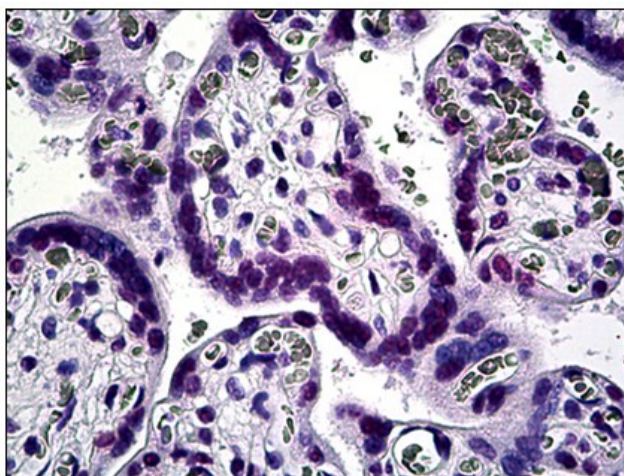


[View online »](#)

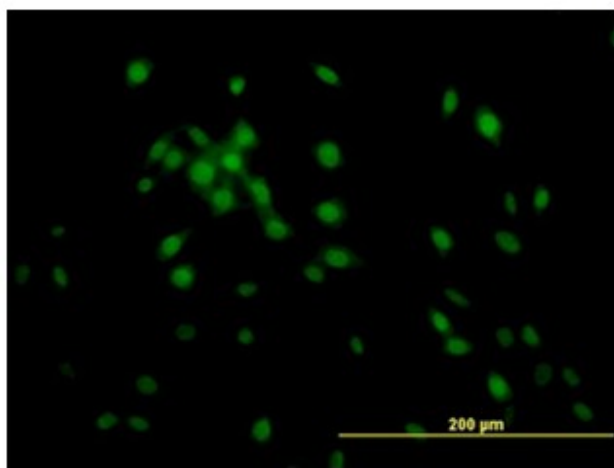
Product images:



KLF11 monoclonal antibody, clone 10D8 Western Blot analysis of KLF11 expression in NIH/3T3.



Human Placenta: Formalin-Fixed, Paraffin-Embedded (FFPE)



Immunofluorescence of monoclonal antibody to KLF11 on NIH/3T3 cell. [antibody concentration 10 ug/ml]