

## Product datasheet for **AM31079PU-N**

### LIM1 (LHX1) (1-101) Mouse Monoclonal Antibody [Clone ID: 2G10]

#### Product data:

Product Type:	Primary Antibodies
Clone Name:	2G10
Applications:	ELISA, IHC
Recommended Dilution:	<b>ELISA.</b> <b>Immunohistochemistry on Paraffin Sections:</b> 5 µg/ml.
Reactivity:	Human
Host:	Mouse
Isotype:	IgG2b
Clonality:	Monoclonal
Immunogen:	IHX1 (NP_005559, 1 a.a. ~ 101 a.a) partial recombinant protein with GST tag
Specificity:	This antibody reacts to LHX1 at aa 1-101.
Formulation:	PBS, pH 7.4 State: Purified State: Liquid purified Ig fraction
Concentration:	lot specific
Purification:	Protein A chromatography
Conjugation:	Unconjugated
Storage:	Store the antibody undiluted at 2-8°C for one month or (in aliquots) at -20°C for longer. Avoid repeated freezing and thawing.
Stability:	Shelf life: one year from despatch.
Gene Name:	LIM homeobox 1
Database Link:	<a href="#">Entrez Gene 3975 Human P48742</a>
Background:	LHX1 is a member of a large protein family which contains the LIM domain, a unique cysteine-rich zinc-binding domain. The encoded protein is a transcription factor important for the development of the renal and urogenital systems. This gene is a candidate for Mayer-Rokitansky-Kuster-Hauser syndrome, a disorder characterized by anomalies in the female genital tract.

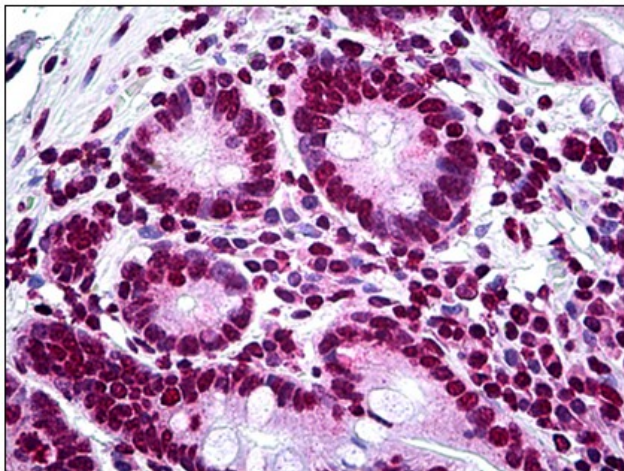


[View online »](#)

**Synonyms:** LHX1, LIM-1, LIM1, LIM/homeobox protein Lhx1, LIM homeobox protein 1, Homeobox protein Lim-1

**Protein Families:** ES Cell Differentiation/IPS, Transcription Factors

**Product images:**



Human Small Intestine: Formalin-Fixed, Paraffin-Embedded (FFPE)