

## Product datasheet for **AM31074PU-N**

### LIM Kinase 1 (LIMK1) Mouse Monoclonal Antibody [Clone ID: 2E9]

#### Product data:

Product Type:	Primary Antibodies
Clone Name:	2E9
Applications:	ELISA, IHC, WB
Recommended Dilution:	<b>ELISA.</b> <b>Immunohistochemistry on Paraffin Sections:</b> 5 µg/ml. <b>Western Blot.</b>
Reactivity:	Human
Host:	Mouse
Isotype:	IgG2a
Clonality:	Monoclonal
Immunogen:	LIMK1 antibody was raised against recombinant protein
Specificity:	This antibody reacts to LIMK1.
Formulation:	PBS, pH 7.2 State: Purified State: Liquid purified Ig fraction
Concentration:	lot specific
Purification:	Protein A chromatography
Conjugation:	Unconjugated
Storage:	Store the antibody undiluted at 2-8°C for one month or (in aliquots) at -20°C for longer. Avoid repeated freezing and thawing.
Stability:	Shelf life: one year from despatch.
Gene Name:	LIM domain kinase 1
Database Link:	<a href="#">Entrez Gene 3984 Human P53667</a>



[View online »](#)

**Background:**

LIMK1, a LIMK -type protein kinase, is a component of the cellular motility machinery regulating actin filament dynamics. The protein is phosphorylated by the coiled-coil-containing protein kinase ROCK, a downstream effector of the GTPase Rho. Activated LIMK1 phosphorylates cofilin and thereby inhibits its actin-depolymerizing activity. At least two protein isoforms of 305 and 647 amino acids have been reported. LIMK1 hemizyosity has been associated with the impaired visuospatial constructive cognition of Williams syndrome.

**Synonyms:**

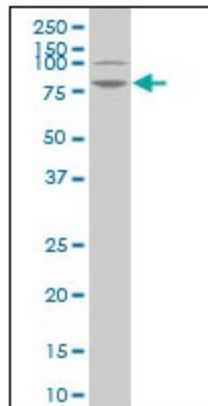
LIMK, LIM domain kinase 1, LIMK-1, EC=2.7.11.1

**Protein Families:**

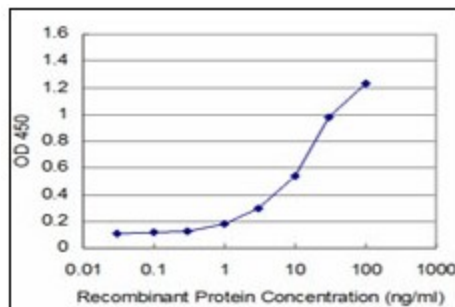
Druggable Genome, Protein Kinase

**Protein Pathways:**

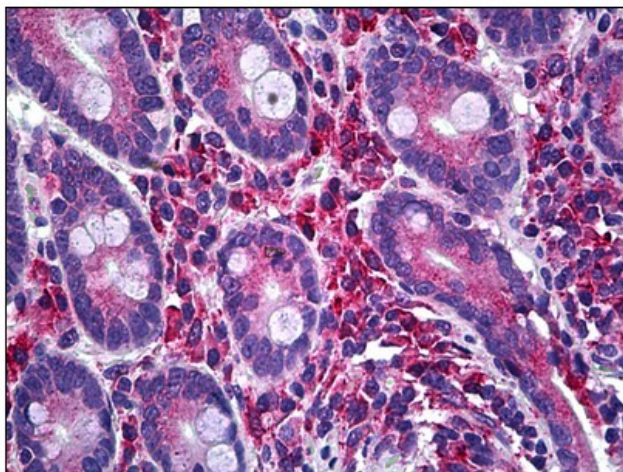
Axon guidance, Fc gamma R-mediated phagocytosis, Regulation of actin cytoskeleton

**Product images:**


LIMK1 monoclonal antibody (M05), clone 2E9  
Western Blot analysis of LIMK1 expression in HeLa.



Detection limit for recombinant GST tagged LIMK1 is approximately 0.3ng/ml as a capture antibody.



Human Small Intestine: Formalin-Fixed, Paraffin-Embedded (FFPE)