

Product datasheet for **AM31070PU-N**

KIFC1 Mouse Monoclonal Antibody [Clone ID: 2B9]

Product data:

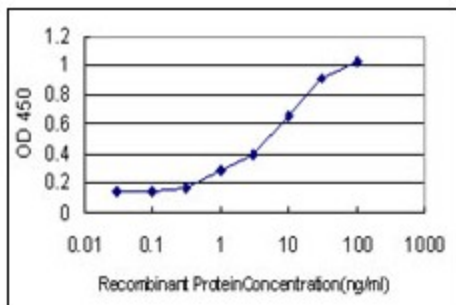
Product Type:	Primary Antibodies
Clone Name:	2B9
Applications:	ELISA, IF, IHC, WB
Recommended Dilution:	ELISA. Immunofluorescence: 10 µg/ml. Immunohistochemistry on Paraffin Sections: 5 µg/ml. Western Blot.
Reactivity:	Human
Host:	Mouse
Isotype:	IgG2a
Clonality:	Monoclonal
Immunogen:	KIFC1 antibody was raised against recombinant protein
Specificity:	This antibody reacts to KIFC1.
Formulation:	PBS, pH 7.2 State: Purified State: Liquid purified Ig fraction
Concentration:	lot specific
Purification:	Protein A chromatography
Conjugation:	Unconjugated
Storage:	Store the antibody undiluted at 2-8°C for one month or (in aliquots) at -20°C for longer. Avoid repeated freezing and thawing.
Stability:	Shelf life: one year from despatch.
Gene Name:	kinesin family member C1
Database Link:	Entrez Gene 3833 Human Q9BW19
Synonyms:	KIFC1, HSET, KNSL2, Kinesin-like protein KIFC1, Kinesin-like protein 2, Kinesin-related protein HSET



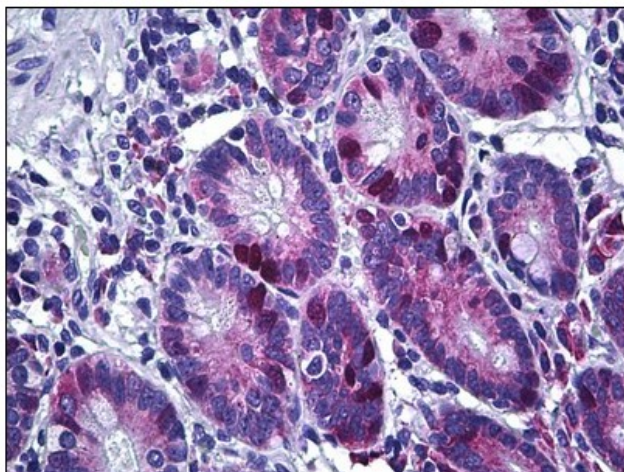
[View online »](#)

Protein Families: Druggable Genome

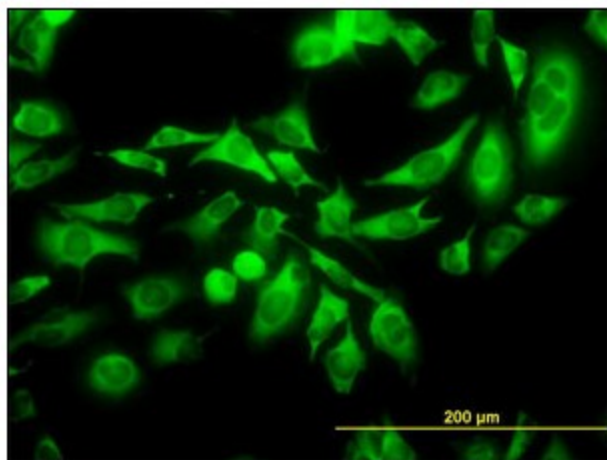
Product images:



Detection limit for recombinant GST tagged KIFC1 is approximately 1 ng/ml as a capture antibody.



Human Small Intestine: Formalin-Fixed, Paraffin-Embedded (FFPE)



Immunofluorescence of monoclonal antibody to KIFC1 on HeLa cell.