

Product datasheet for **AM31063PU-N**

GGT1 (381-471) Mouse Monoclonal Antibody [Clone ID: 1F9]

Product data:

Product Type:	Primary Antibodies
Clone Name:	1F9
Applications:	ELISA, IHC, IP, WB
Recommended Dilution:	ELISA. Immunohistochemistry on Paraffin Sections: 5 µg/ml. Immunoprecipitation. Western Blot: 1/500 - 1/1000.
Reactivity:	Human, Mouse
Host:	Mouse
Isotype:	IgG2a
Clonality:	Monoclonal
Immunogen:	GGT1(NP_005256, 381 a.a. ~ 471 a.a) partial recombinant protein with GST tag
Specificity:	This antibody recognizes GGT1 / GGT at aa 381-471.
Formulation:	PBS, pH 7.4. Sourced in Ascites State: Purified State: Liquid purified IgG fraction
Concentration:	lot specific
Purification:	Protein A Chromatography
Conjugation:	Unconjugated
Storage:	Store undiluted at 2-8°C for one month or (in aliquots) at -20°C for longer. Avoid repeated freezing and thawing.
Stability:	Shelf life: one year from despatch.
Gene Name:	gamma-glutamyltransferase 1
Database Link:	Entrez Gene 14598 Mouse Entrez Gene 2678 Human P19440



[View online »](#)

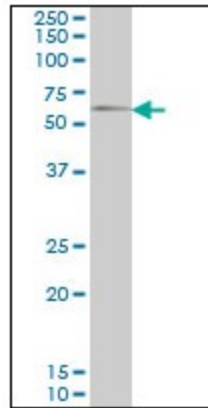
Background: Cleaves the gamma-glutamyl bond of extracellular glutathione (gamma-Glu-Cys-Gly), glutathione conjugates, and other gamma-glutamyl compounds. The metabolism of glutathione releases free glutamate and the dipeptide, cysteinyl-glycine, which is hydrolyzed to cysteine and glycine by dipeptidases.

Synonyms: Gamma-glutamyltransferase 1

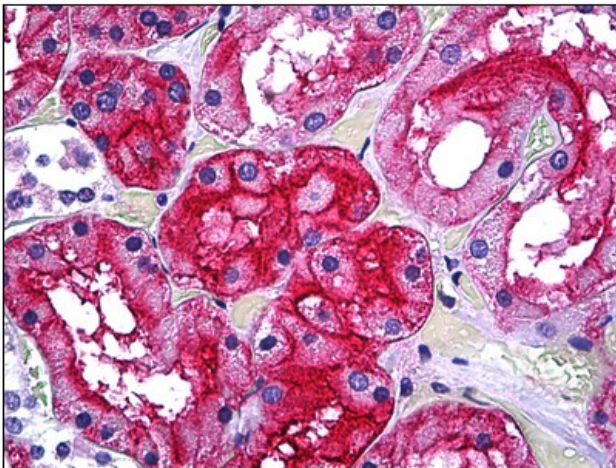
Protein Families: Protease, Transmembrane

Protein Pathways: Arachidonic acid metabolism, Cyanoamino acid metabolism, Glutathione metabolism, Metabolic pathways, Selenoamino acid metabolism, Taurine and hypotaurine metabolism

Product images:



GGT1 monoclonal antibody clone 1F9 Western Blot analysis of GGT1 expression in NIH/3T3.



Human Kidney, Tubules: Formalin-Fixed, Paraffin-Embedded (FFPE)