

Product datasheet for **AM31060PU-N**

Fibrinogen gamma chain (FGG) (31-130) Mouse Monoclonal Antibody [Clone ID: 1F2]

Product data:

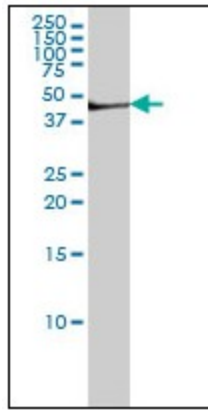
Product Type:	Primary Antibodies
Clone Name:	1F2
Applications:	ELISA, IHC, WB
Recommended Dilution:	ELISA. Immunohistochemistry on Paraffin Sections: 5 µg/ml. Western Blot: 1/500 - 1/1000.
Reactivity:	Human
Host:	Mouse
Isotype:	IgG1
Clonality:	Monoclonal
Immunogen:	FGG (AAH07044, 31 a.a. ~ 130 a.a) partial recombinant protein with GST tag. MW of the GST tag alone is 26 KDa.
Specificity:	This antibody recognizes Human Fibrinogen Gamma-b Chain.
Formulation:	PBS, pH 7.2 State: Purified State: Liquid purified Ig fraction from Ascites
Concentration:	lot specific
Purification:	Protein A chromatography
Conjugation:	Unconjugated
Storage:	Store the antibody undiluted at 2-8°C for one month or (in aliquots) at -20°C for longer. Avoid repeated freezing and thawing.
Stability:	Shelf life: one year from despatch.
Gene Name:	fibrinogen gamma chain
Database Link:	Entrez Gene 2266 Human P02679
Synonyms:	FGG, PRO2061, FIBG
Protein Families:	Druggable Genome, Secreted Protein, Transmembrane



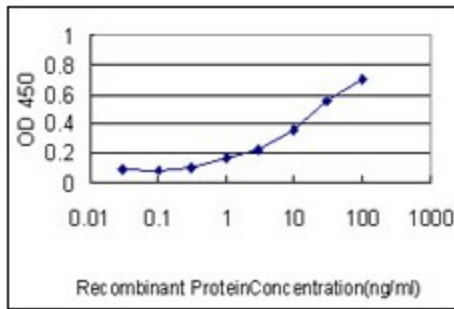
[View online »](#)

Protein Pathways: Complement and coagulation cascades

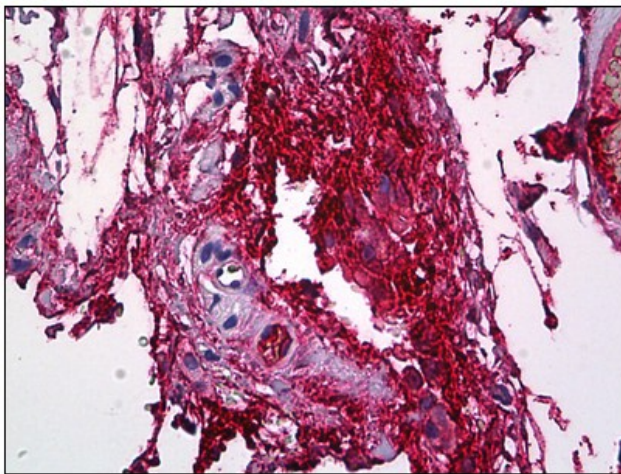
Product images:



FGG monoclonal antibody clone 1F2 Western Blot analysis of FGG expression in Hela NE.



Detection limit for recombinant GST tagged FGG is approximately 0.3ng/ml as a capture antibody.



Human Intravascular Plasma: Formalin-Fixed, Paraffin-Embedded (FFPE)