

Product datasheet for **AM31056PU-N**

GALT Mouse Monoclonal Antibody [Clone ID: 4C11]

Product data:

Product Type:	Primary Antibodies
Clone Name:	4C11
Applications:	ELISA, IHC, WB
Recommended Dilution:	ELISA. Immunohistochemistry on Paraffin Sections: 10 µg/ml. Western Blot.
Reactivity:	Human
Host:	Mouse
Isotype:	IgG2a
Clonality:	Monoclonal
Immunogen:	GALT (AAH15045, 1 a.a. ~ 380 a.a) full length recombinant protein with GST tag. MW of the GST tag alone is 26 KDa.
Specificity:	This antibody reacts to GALT.
Formulation:	PBS, pH 7.2 State: Purified State: Liquid purified Ig fraction
Concentration:	lot specific
Purification:	Protein A chromatography
Conjugation:	Unconjugated
Storage:	Store the antibody undiluted at 2-8°C for one month or (in aliquots) at -20°C for longer. Avoid repeated freezing and thawing.
Stability:	Shelf life: one year from despatch.
Gene Name:	galactose-1-phosphate uridylyltransferase
Database Link:	Entrez Gene 2592 Human P07902



[View online »](#)

Background:

Galactose-1-phosphate uridyl transferase (GALT) catalyzes the second step of the Leloir pathway of galactose metabolism, namely the conversion of UDP-glucose + galactose-1-phosphate to glucose-1-phosphate + UDP-galactose. The absence of this enzyme results in classic galactosemia in humans and can be fatal in the newborn period if lactose is not removed from the diet. The pathophysiology of galactosemia has not been clearly defined.

Synonyms:

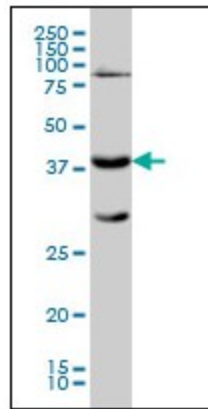
Gal-1-P uridyltransferase

Protein Families:

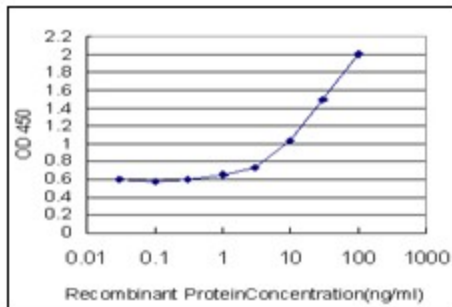
Druggable Genome

Protein Pathways:

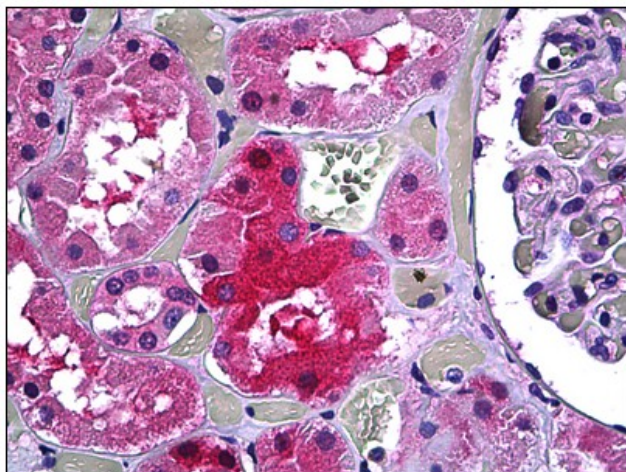
Amino sugar and nucleotide sugar metabolism, Galactose metabolism, Metabolic pathways

Product images:


GALT monoclonal antibody clone 4C11 Western Blot analysis of GALT expression in K-562.



Detection limit for recombinant GST tagged GALT is approximately 0.3ng/ml as a capture antibody.



Human Kidney, Tubules: Formalin-Fixed, Paraffin-Embedded (FFPE)