

## Product datasheet for **AM31051PU-N**

### Eph receptor B6 (EPHB6) Mouse Monoclonal Antibody [Clone ID: 5D8]

#### Product data:

Product Type:	Primary Antibodies
Clone Name:	5D8
Applications:	ELISA, IHC, WB
Recommended Dilution:	<b>ELISA.</b> <b>Immunohistochemistry on Paraffin Sections:</b> 5 µg/ml. <b>Western Blot</b>
Reactivity:	Human, Mouse, Rat
Host:	Mouse
Isotype:	IgG2a
Clonality:	Monoclonal
Immunogen:	EPHB6 antibody was raised against recombinant protein
Specificity:	This antibody reacts to EPHB6.
Formulation:	PBS, pH 7.2 State: Purified State: Liquid purified Ig fraction
Concentration:	lot specific
Purification:	Protein A chromatography
Conjugation:	Unconjugated
Storage:	Store the antibody undiluted at 2-8°C for one month or (in aliquots) at -20°C for longer. Avoid repeated freezing and thawing.
Stability:	Shelf life: one year from despatch.
Gene Name:	EPH receptor B6
Database Link:	<a href="#">Entrez Gene 13848 Mouse</a> <a href="#">Entrez Gene 312275 Rat</a> <a href="#">Entrez Gene 2051 Human O15197</a>
Background:	EPHB6 belongs to the ephrin receptor kinase family. EPHB6 does not have intrinsic tyrosine kinase activity because six invariant amino acids were have been substituted. Despite its lack of kinase activity, ligand binding results in trans-phosphorylation of EphB6 and the initiation of specific cytoplasmic signaling events.



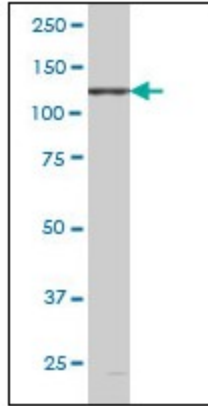
[View online »](#)

**Synonyms:** Ephrin type-B receptor 6, EPH-6, HEP

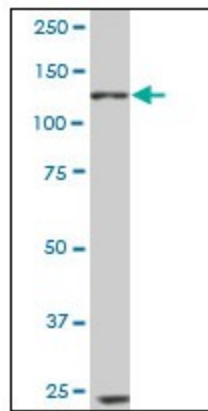
**Protein Families:** Druggable Genome, Protein Kinase, Transmembrane

**Protein Pathways:** Axon guidance

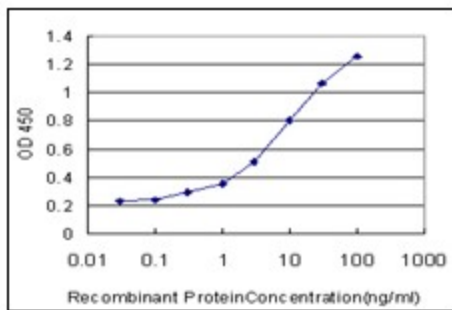
**Product images:**



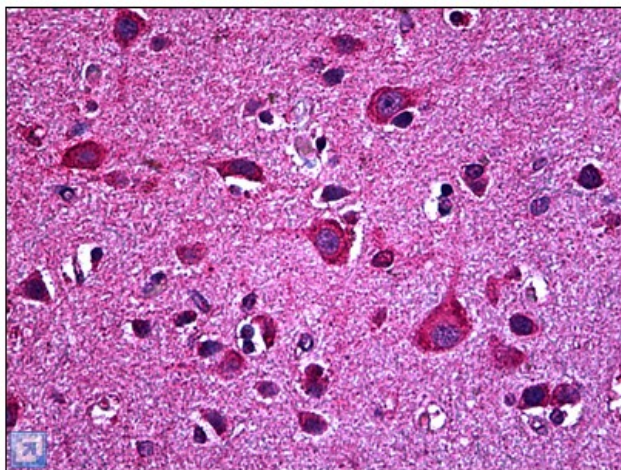
EPHB6 monoclonal antibody clone 5D8 Western Blot analysis of EPHB6 expression in PC-12.



EPHB6 monoclonal antibody clone 5D8. Western Blot analysis of EPHB6 expression in NIH/3T3.



Detection limit for recombinant GST tagged EPHB6 is approximately 0.3ng/ml as a capture antibody.



Human Brain, Cortex: Formalin-Fixed, Paraffin-Embedded (FFPE)