

Product datasheet for **AM31050PU-N**

ENO3 Mouse Monoclonal Antibody [Clone ID: 5D1]

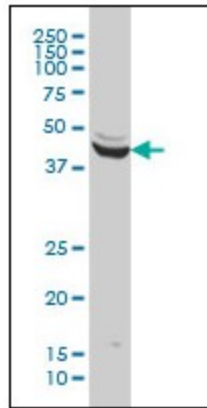
Product data:

Product Type:	Primary Antibodies
Clone Name:	5D1
Applications:	ELISA, IF, IHC, WB
Recommended Dilution:	ELISA. Immunofluorescence: 10 µg/ml. Immunohistochemistry on Paraffin Sections: 5 µg/ml. Western Blot.
Reactivity:	Human
Host:	Mouse
Isotype:	IgG2a
Clonality:	Monoclonal
Immunogen:	ENO3 antibody was raised against recombinant protein
Specificity:	This antibody reacts to ENO3.
Formulation:	PBS, pH 7.2 State: Purified State: Liquid purified Ig fraction
Concentration:	lot specific
Purification:	Protein A chromatography
Conjugation:	Unconjugated
Storage:	Store the antibody undiluted at 2-8°C for one month or (in aliquots) at -20°C for longer. Avoid repeated freezing and thawing.
Stability:	Shelf life: one year from despatch.
Gene Name:	enolase 3
Database Link:	Entrez Gene 2027 Human P13929
Synonyms:	Muscle-specific enolase, Skeletal muscle enolase, Enolase 3, ENO3, ENOB
Protein Pathways:	Glycolysis / Gluconeogenesis, Metabolic pathways, RNA degradation

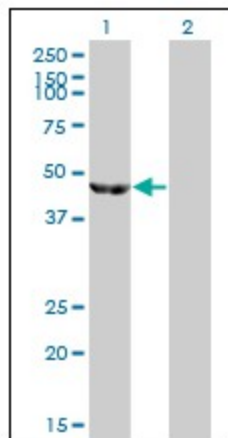


[View online »](#)

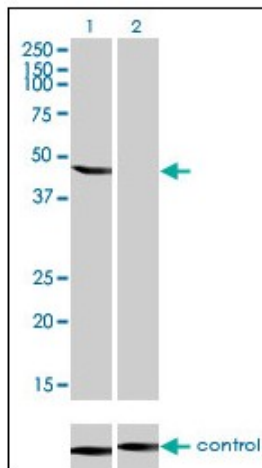
Product images:



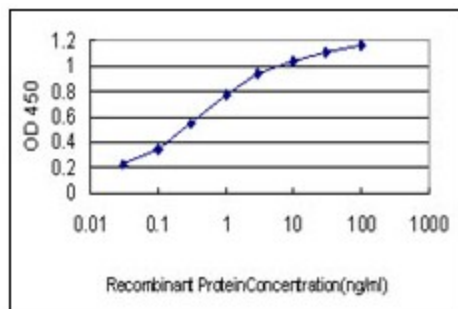
ENO3 monoclonal antibody (M01), clone 5D1
Western Blot analysis of ENO3 expression in HeLa.



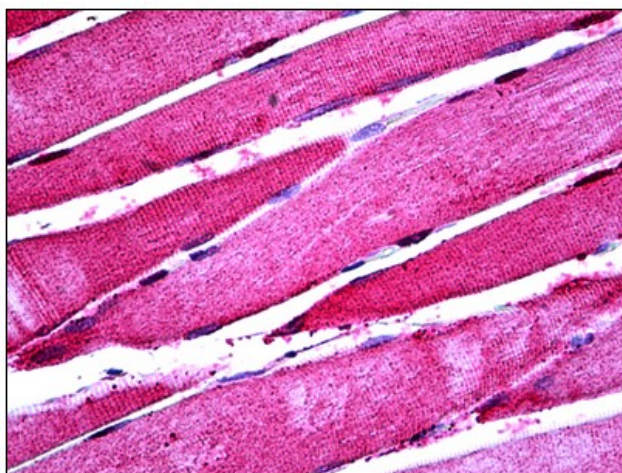
Western Blot analysis of ENO3 expression in transfected 293T cell line by ENO3 monoclonal antibody (M01), clone 5D1.



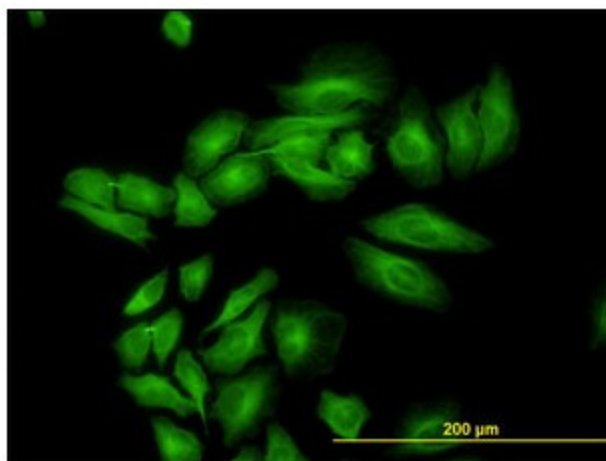
Western blot analysis of ENO3 over-expressed 293 cell line, cotransfected with ENO3 Validated Chimera RNAi (Lane 2) or non-transfected control (Lane 1). Blot probed with ENO3 monoclonal antibody (M01), clone 5D1.



Detection limit for recombinant GST tagged ENO3 is approximately 0.03ng/ml as a capture antibody.



Human Skeletal Muscle: Formalin-Fixed, Paraffin-Embedded (FFPE)



Immunofluorescence of monoclonal antibody to ENO3 on HeLa cell. [antibody concentration 10 ug/ml]