

Product datasheet for **AM31045PU-N**

DNA PKcs (PRKDC) Mouse Monoclonal Antibody [Clone ID: 2A8]

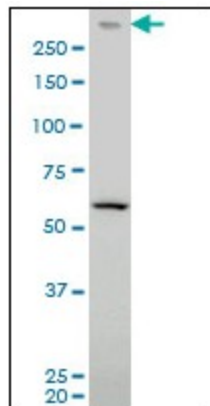
Product data:

Product Type:	Primary Antibodies
Clone Name:	2A8
Applications:	ELISA, IHC, WB
Recommended Dilution:	ELISA. Immunohistochemistry on Paraffin Sections: 5 µg/ml. Western Blot.
Reactivity:	Human
Host:	Mouse
Isotype:	IgG2a
Clonality:	Monoclonal
Immunogen:	PRKDC antibody was raised against recombinant protein
Specificity:	This antibody reacts to PRKDC / DNA-PKcs.
Formulation:	PBS, pH 7.2 State: Purified State: Liquid purified Ig fraction
Concentration:	lot specific
Purification:	Protein A chromatography
Conjugation:	Unconjugated
Storage:	Store the antibody undiluted at 2-8°C for one month or (in aliquots) at -20°C for longer. Avoid repeated freezing and thawing.
Stability:	Shelf life: one year from despatch.
Gene Name:	protein kinase, DNA-activated, catalytic polypeptide
Database Link:	Entrez Gene 5591 Human P78527
Synonyms:	DNPK1, p460, HYRC, HYRC1
Protein Families:	Druggable Genome, Protein Kinase
Protein Pathways:	Cell cycle, Non-homologous end-joining

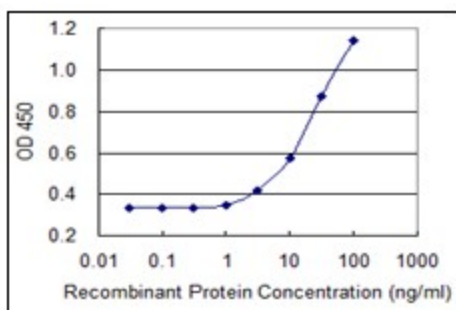


[View online »](#)

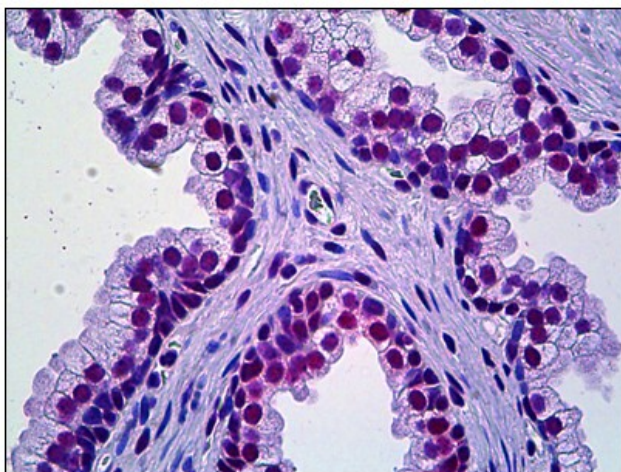
Product images:



PRKDC monoclonal antibody clone 2A8 Western Blot analysis of PRKDC expression in HeLa NE.



Detection limit for recombinant GST tagged PRKDC is 1 ng/ml as a capture antibody.



Human Prostate: Formalin-Fixed, Paraffin-Embedded (FFPE)