

## Product datasheet for **AM31044PU-N**

### **SAPK4 (MAPK13) Mouse Monoclonal Antibody [Clone ID: 2D8]**

#### **Product data:**

Product Type:	Primary Antibodies
Clone Name:	2D8
Applications:	ELISA, IF, IHC, WB
Recommended Dilution:	<b>ELISA.</b> <b>Immunofluorescence:</b> 10 µg/ml. <b>Immunohistochemistry on Paraffin Sections:</b> 5 µg/ml. <b>Western Blot:</b> 1/500 - 1/1000.
Reactivity:	Human
Host:	Mouse
Isotype:	IgG2b
Clonality:	Monoclonal
Immunogen:	MAPK13 antibody was raised against recombinant protein
Specificity:	This antibody reacts to MAPK13 / SAPK4.
Formulation:	PBS, pH 7.2 State: Purified State: Liquid purified Ig fraction
Concentration:	lot specific
Purification:	Protein A chromatography
Conjugation:	Unconjugated
Storage:	Store the antibody undiluted at 2-8°C for one month or (in aliquots) at -20°C for longer. Avoid repeated freezing and thawing.
Stability:	Shelf life: one year from despatch.
Gene Name:	mitogen-activated protein kinase 13
Database Link:	<a href="#">Entrez Gene 5603 Human</a> <a href="#">O15264</a>



[View online »](#)

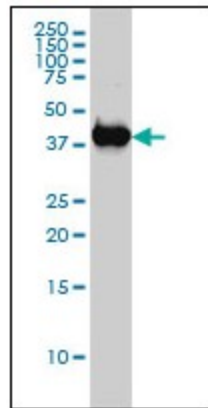
**Background:** MAP kinase p38 delta, a MAPK type protein kinase, is an environmental stress- and inflammatory cytokine-induced kinase that is associated with the regulation of gene expression and cell proliferation. p38delta is phosphorylated by MEK3/MAP2K3 or MKK6/MAP2K6. Activated p38delta has been shown to phosphorylate ATF2, eEF2K, MBP and PHAS-1.

**Synonyms:** Mitogen-activated protein kinase 13, Stress-activated protein kinase 4, p38 delta, PRKM13, SAPK4

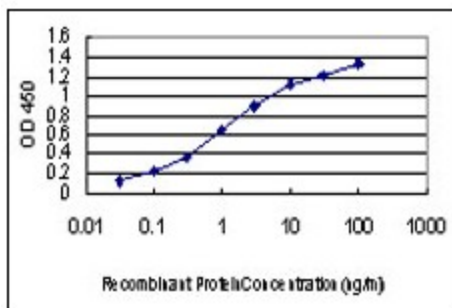
**Protein Families:** Druggable Genome, Protein Kinase

**Protein Pathways:** Amyotrophic lateral sclerosis (ALS), Epithelial cell signaling in Helicobacter pylori infection, Fc epsilon RI signaling pathway, GnRH signaling pathway, Leukocyte transendothelial migration, MAPK signaling pathway, Neurotrophin signaling pathway, NOD-like receptor signaling pathway, Progesterone-mediated oocyte maturation, RIG-I-like receptor signaling pathway, T cell receptor signaling pathway, Toll-like receptor signaling pathway, VEGF signaling pathway

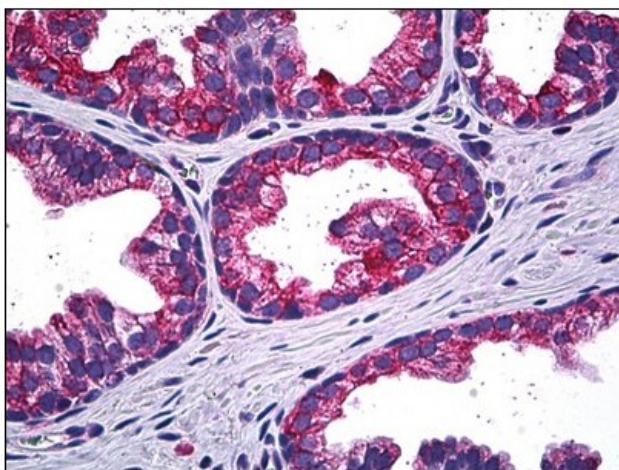
**Product images:**



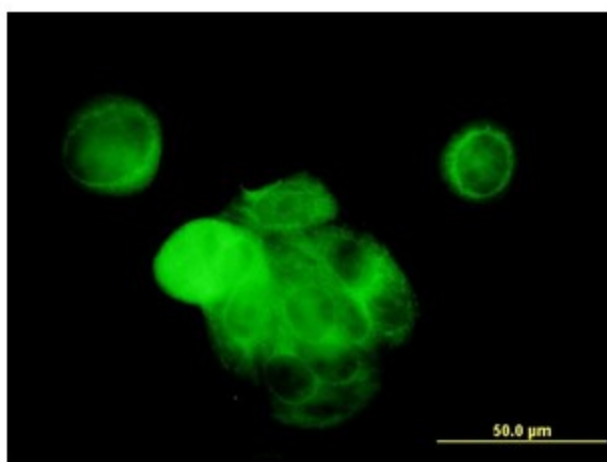
MAPK13 monoclonal antibody (M02), clone 2D8  
Western Blot analysis of MAPK13 expression in MCF-7.



Detection limit for recombinant GST tagged MAPK13 is approximately 0.1ng/ml as a capture antibody.



Human Prostate: Formalin-Fixed, Paraffin-Embedded (FFPE)



Immunofluorescence of monoclonal antibody to MAPK13 on MCF-7 cell. [antibody concentration 10 ug/ml]