

Product datasheet for **AM31042PU-N**

SMARCD2 Mouse Monoclonal Antibody [Clone ID: 2F7]

Product data:

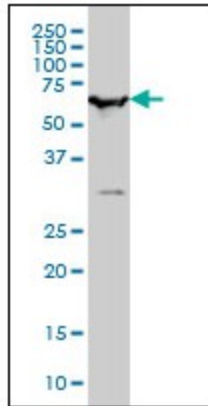
Product Type:	Primary Antibodies
Clone Name:	2F7
Applications:	ELISA, IF, IHC, WB
Recommended Dilution:	ELISA. Immunofluorescence: 10 µg/ml. Immunohistochemistry on Paraffin Sections: 5 µg/ml. Western Blot.
Reactivity:	Human
Host:	Mouse
Isotype:	IgG2a
Clonality:	Monoclonal
Immunogen:	SMARCD2 antibody was raised against recombinant protein
Specificity:	This antibody reacts to SMARCD2.
Formulation:	PBS, pH 7.2 State: Purified State: Liquid purified Ig fraction
Concentration:	lot specific
Purification:	Protein A chromatography
Conjugation:	Unconjugated
Storage:	Store the antibody undiluted at 2-8°C for one month or (in aliquots) at -20°C for longer. Avoid repeated freezing and thawing.
Stability:	Shelf life: one year from despatch.
Gene Name:	SWI/SNF related, matrix associated, actin dependent regulator of chromatin, subfamily d, member 2
Database Link:	Entrez Gene 6603 Human Q92925
Synonyms:	BAF60B



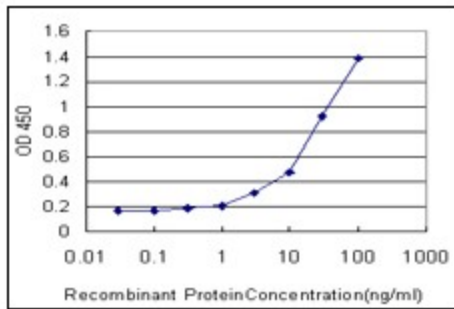
[View online »](#)

Protein Families: Transcription Factors

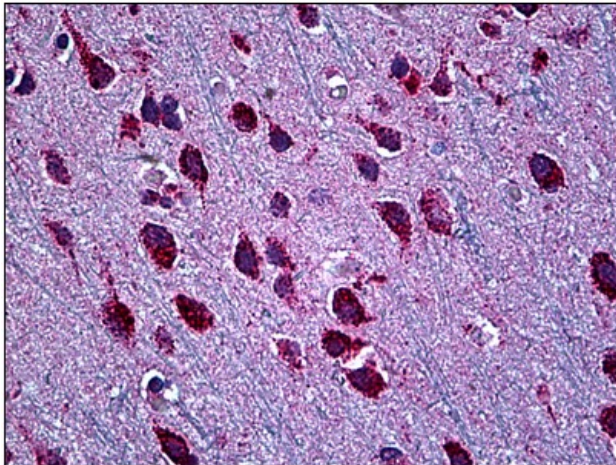
Product images:



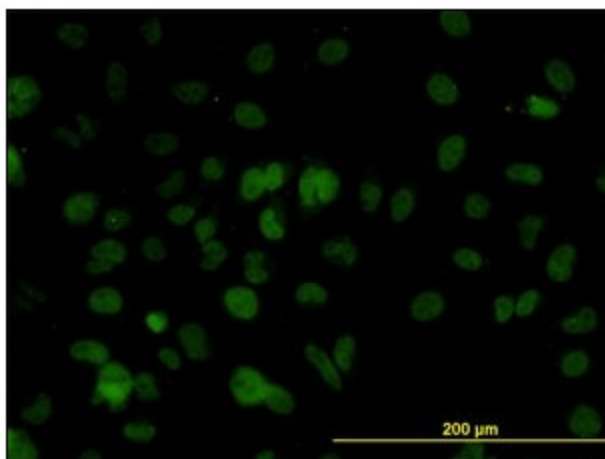
SMARCD2 monoclonal antibody clone 2F7
Western Blot analysis of SMARCD2 expression in HeLa NE.



Detection limit for recombinant GST tagged SMARCD2 is approximately 1 ng/ml as a capture antibody.



Human Brain, Cortex: Formalin-Fixed, Paraffin-Embedded (FFPE)



Immunofluorescence of monoclonal antibody to SMARCD2 on HeLa cell. [antibody concentration 10 ug/ml]