

Product datasheet for **AM31039PU-N**

RALB Mouse Monoclonal Antibody [Clone ID: 4D1]

Product data:

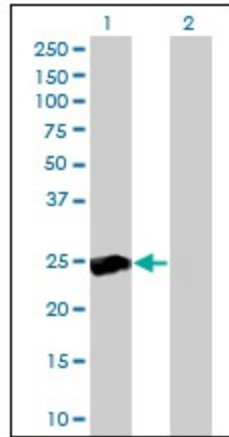
Product Type:	Primary Antibodies
Clone Name:	4D1
Applications:	ELISA, IHC, IP, WB
Recommended Dilution:	ELISA. Immunohistochemistry on Paraffin Sections: 5 µg/ml. Immunoprecipitation. Western Blot: 1/500 - 1/1000.
Reactivity:	Human
Host:	Mouse
Isotype:	IgG2a
Clonality:	Monoclonal
Immunogen:	RALB antibody was raised against recombinant protein
Specificity:	This antibody reacts to RALB.
Formulation:	PBS, pH 7.2 State: Purified State: Liquid purified Ig fraction
Concentration:	lot specific
Purification:	Protein A chromatography
Conjugation:	Unconjugated
Storage:	Store the antibody undiluted at 2-8°C for one month or (in aliquots) at -20°C for longer. Avoid repeated freezing and thawing.
Stability:	Shelf life: one year from despatch.
Gene Name:	RALB Ras like proto-oncogene B
Database Link:	Entrez Gene 5899 Human P11234
Background:	The human RAL proteins share more than 50% similarity and some properties with the ras proteins. One member of this family, RALA, maps to 7p. A second member of the family, RALB, encoding a GTP-binding protein is located on 2cen-q13.



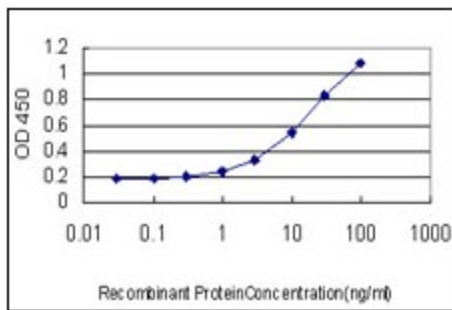
[View online »](#)

Synonyms: Ral-B
Protein Families: Druggable Genome
Protein Pathways: Pancreatic cancer, Pathways in cancer

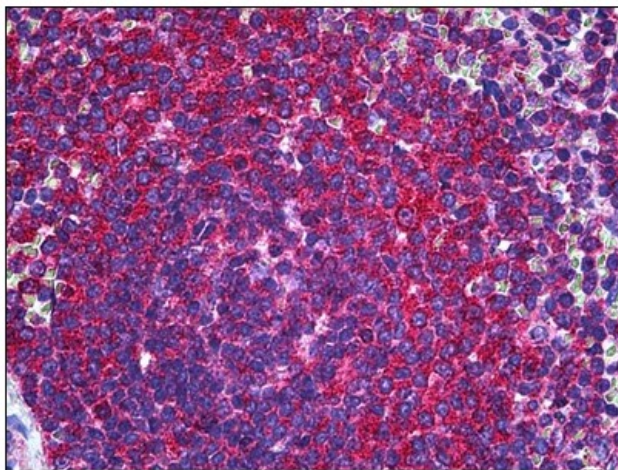
Product images:



Western Blot analysis of RALB expression in transfected 293T cell line by RALB monoclonal antibody clone 4D1.



Detection limit for recombinant GST tagged RALB is approximately 0.3ng/ml as a capture antibody.



Human Spleen: Formalin-Fixed, Paraffin-Embedded (FFPE)