

## Product datasheet for **AM31038PU-N**

### MEK3 (MAP2K3) (1-100) Mouse Monoclonal Antibody [Clone ID: 1D10]

#### Product data:

Product Type:	Primary Antibodies
Clone Name:	1D10
Applications:	ELISA, IHC, WB
Recommended Dilution:	<b>ELISA.</b> <b>Immunohistochemistry on Paraffin Sections:</b> 5 µg/ml. <b>Western Blot:</b> 1/500 - 1/1000.
Reactivity:	Human
Host:	Mouse
Isotype:	IgG1
Clonality:	Monoclonal
Immunogen:	MAP2K3 / MEK3 / MKK3 antibody was raised against mAP2K3 (AAH32478, 1 a.a. ~ 100 a.a) partial recombinant protein with GST tag. MW of the GST tag alone is 26 KDa.
Specificity:	This antibody reacts to MAP2K3 / MEK3 at aa 1-100.
Formulation:	PBS, pH 7.4 State: Purified State: Liquid purified Ig fraction
Concentration:	lot specific
Purification:	Protein A chromatography
Conjugation:	Unconjugated
Storage:	Store the antibody undiluted at 2-8°C for one month or (in aliquots) at -20°C for longer. Avoid repeated freezing and thawing.
Stability:	Shelf life: one year from despatch.
Gene Name:	mitogen-activated protein kinase kinase 3
Database Link:	<a href="#">Entrez Gene 5606 Human P46734</a>



[View online »](#)

**Background:**

MEK3, a MAP2K type protein kinase, is a member of the p38 MAP kinase signal transduction pathway which mediates stress induced cell cycle arrest, transcription activation and apoptosis. MEK3 can be activated by insulin and is required for glucose transporter expression. The protein is phosphorylated by ASK1 or TAO1, and in turn, it phosphorylates the MAPKs p38-alpha and -beta. At least three protein isoforms, resulting from alternatively spliced transcript variants of the MEK3 gene, have been identified - 318, 347 and 352 amino acids. Oncogenic transformation of primary cells has been linked to accumulation of activated MEK3 which results from expression of the RAS oncogene. Yersinia pseudotuberculosis has been shown to block phosphorylation and subsequent activation of MEK3.

**Synonyms:**

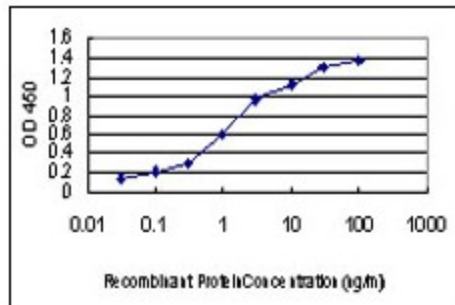
MAPKK 3, MEK3, MKK3, MAP kinase kinase 3

**Protein Families:**

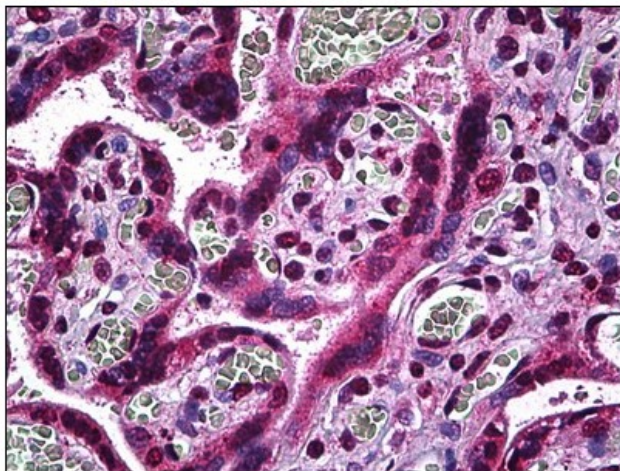
Druggable Genome, Protein Kinase, Transcription Factors

**Protein Pathways:**

Amyotrophic lateral sclerosis (ALS), Fc epsilon RI signaling pathway, GnRH signaling pathway, MAPK signaling pathway, Toll-like receptor signaling pathway

**Product images:**


Detection limit for recombinant GST tagged MAP2K3 is approximately 0.03ng/ml as a capture antibody.



Human Placenta: Formalin-Fixed, Paraffin-Embedded (FFPE)