

Product datasheet for **AM31037PU-N**

CXCL5 (1-115) Mouse Monoclonal Antibody [Clone ID: 2A9]

Product data:

Product Type:	Primary Antibodies
Clone Name:	2A9
Applications:	ELISA, IHC, WB
Recommended Dilution:	ELISA. Immunohistochemistry on Paraffin Sections: 5 µg/ml. Western Blot.
Reactivity:	Human
Host:	Mouse
Isotype:	IgG1
Clonality:	Monoclonal
Immunogen:	CXCL5 antibody was raised against cXCL5 (AAH08376, 1 a.a. ~ 115 a.a) full length recombinant protein with GST tag.
Specificity:	This antibody reacts to full length human CXCL5.
Formulation:	PBS, pH 7.2 State: Purified State: Liquid purified Ig fraction
Concentration:	lot specific
Purification:	Protein A chromatography
Conjugation:	Unconjugated
Storage:	Store the antibody undiluted at 2-8°C for one month or (in aliquots) at -20°C for longer. Avoid repeated freezing and thawing.
Stability:	Shelf life: one year from despatch.
Gene Name:	C-X-C motif chemokine ligand 5
Database Link:	Entrez Gene 6374 Human P42830



[View online »](#)

Background:

CXCL5 is a protein that is a member of the CXC subfamily of chemokines. Chemokines, which recruit and activate leukocytes, are classified by function (inflammatory or homeostatic) or by structure. This protein is proposed to bind the G-protein coupled receptor chemokine (C-X-C motif) receptor 2 to recruit neutrophils, to promote angiogenesis and to remodel connective tissues. This protein is thought to play a role in cancer cell proliferation, migration, and invasion.

Synonyms:

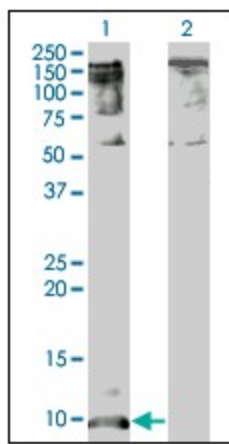
C-X-C motif chemokine 5, Small-inducible cytokine B5, ENA-78, SCYB5, Cytokine LIX

Protein Families:

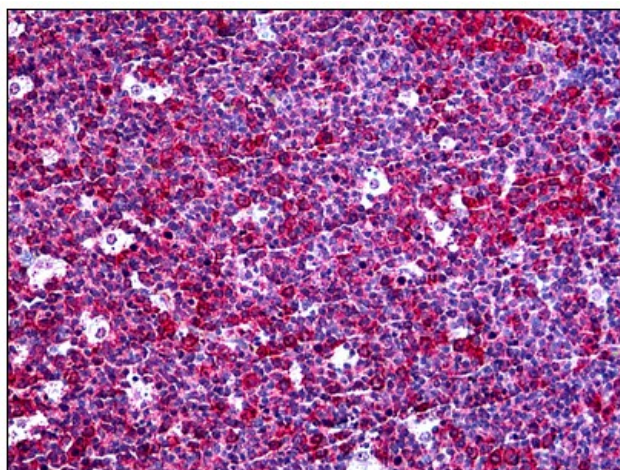
Druggable Genome, Secreted Protein

Protein Pathways:

Chemokine signaling pathway, Cytokine-cytokine receptor interaction

Product images:


Western Blot analysis of CXCL5 expression in transfected 293T cell line by CXCL5 monoclonal antibody clone 2A9.



Human Tonsil: Formalin-Fixed, Paraffin-Embedded (FFPE)