

Product datasheet for **AM31036PU-N**

Surfactant protein D (SFTPD) Mouse Monoclonal Antibody [Clone ID: 2A10]

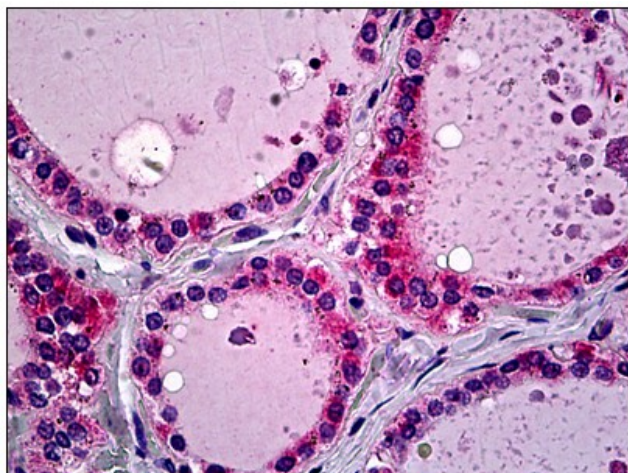
Product data:

Product Type:	Primary Antibodies
Clone Name:	2A10
Applications:	ELISA, IHC, WB
Recommended Dilution:	ELISA. Immunohistochemistry on Paraffin Sections: 5 µg/ml. Western Blot.
Reactivity:	Human
Host:	Mouse
Isotype:	IgG1
Clonality:	Monoclonal
Immunogen:	SFTPD antibody was raised against recombinant protein
Specificity:	This antibody reacts to SFTPD / SP-D.
Formulation:	PBS, pH 7.2 State: Purified State: Liquid purified Ig fraction
Concentration:	lot specific
Purification:	Protein A chromatography
Conjugation:	Unconjugated
Storage:	Store the antibody undiluted at 2-8°C for one month or (in aliquots) at -20°C for longer. Avoid repeated freezing and thawing.
Stability:	Shelf life: one year from despatch.
Gene Name:	surfactant protein D
Database Link:	Entrez Gene 6441 Human P35247
Synonyms:	Lung surfactant protein D, SP-D, PSP-D, PSPD, SFTP4, Collectin-7, COLEC7
Protein Families:	Druggable Genome, Secreted Protein



[View online »](#)

Product images:



Human Thyroid: Formalin-Fixed, Paraffin-Embedded (FFPE)