

Product datasheet for **AM31030PU-N**

SFPQ Mouse Monoclonal Antibody [Clone ID: 6D7]

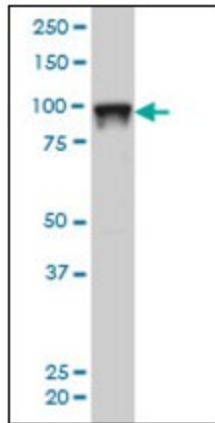
Product data:

Product Type:	Primary Antibodies
Clone Name:	6D7
Applications:	ELISA, IF, IHC, WB
Recommended Dilution:	ELISA. Immunofluorescence: 10 µg/ml. Immunohistochemistry on Paraffin Sections: 5 µg/ml. Western Blot.
Reactivity:	Human
Host:	Mouse
Isotype:	IgG2a
Clonality:	Monoclonal
Immunogen:	SFPQ antibody was raised against recombinant protein
Specificity:	This antibody reacts to SFPQ.
Formulation:	PBS, pH 7.2 State: Purified State: Liquid purified Ig fraction
Concentration:	lot specific
Purification:	Protein A chromatography
Conjugation:	Unconjugated
Storage:	Store the antibody undiluted at 2-8°C for one month or (in aliquots) at -20°C for longer. Avoid repeated freezing and thawing.
Stability:	Shelf life: one year from despatch.
Gene Name:	splicing factor proline/glutamine-rich
Database Link:	Entrez Gene 6421 Human P23246
Synonyms:	POMP100
Protein Families:	Transcription Factors

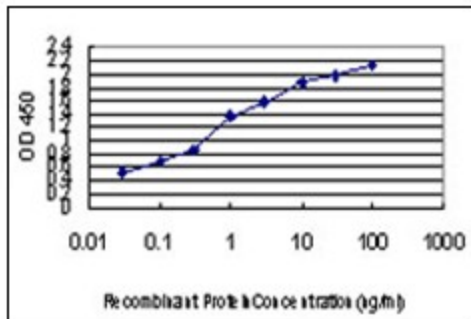


[View online »](#)

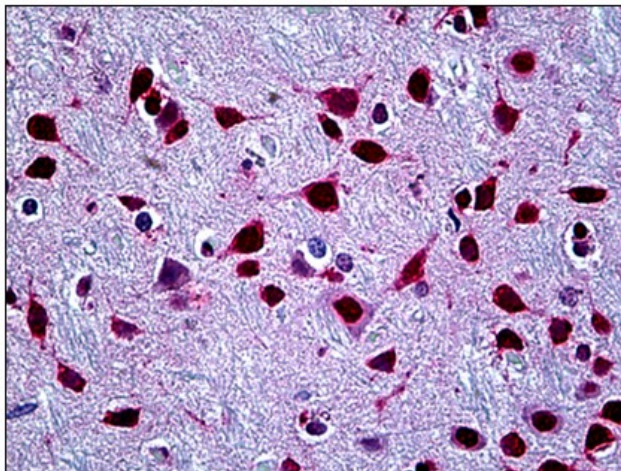
Product images:



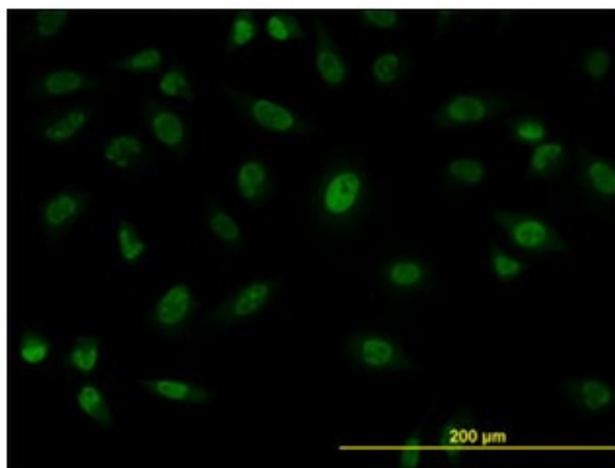
SFPQ monoclonal antibody clone 6D7 Western Blot analysis of SFPQ expression in Hela NE.



Detection limit for recombinant GST tagged SFPQ is approximately 0.03ng/ml as a capture antibody.



Human Brain, Cortex: Formalin-Fixed, Paraffin-Embedded (FFPE)



Immunofluorescence of monoclonal antibody to SFPQ on HeLa cell. [antibody concentration 10 ug/ml]