

Product datasheet for **AM31023PU-N**

SPINK1 Mouse Monoclonal Antibody [Clone ID: 4D4]

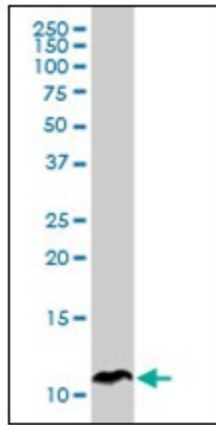
Product data:

Product Type:	Primary Antibodies
Clone Name:	4D4
Applications:	ELISA, IHC, IP, WB
Recommended Dilution:	ELISA. Immunohistochemistry on Paraffin Sections: 5 µg/ml. Immunoprecipitation. Western Blot: 1/500 - 1/1000.
Reactivity:	Human
Host:	Mouse
Isotype:	IgG2a
Clonality:	Monoclonal
Immunogen:	SPINK1 antibody was raised against recombinant protein
Specificity:	This antibody reacts to SPINK1.
Formulation:	PBS, pH 7.2 State: Purified State: Liquid purified Ig fraction
Concentration:	lot specific
Purification:	Protein A chromatography
Conjugation:	Unconjugated
Storage:	Store the antibody undiluted at 2-8°C for one month or (in aliquots) at -20°C for longer. Avoid repeated freezing and thawing.
Stability:	Shelf life: one year from despatch.
Gene Name:	serine peptidase inhibitor, Kazal type 1
Database Link:	Entrez Gene 6690 Human P00995
Synonyms:	Pancreatic secretory trypsin inhibitor, PSTI, TATI
Protein Families:	Druggable Genome, Secreted Protein

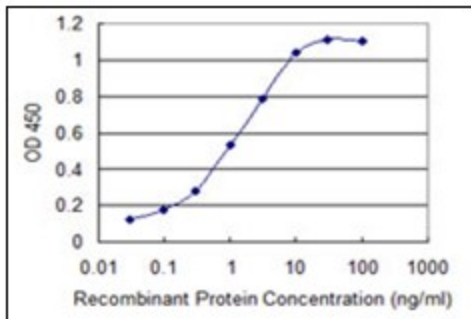


[View online »](#)

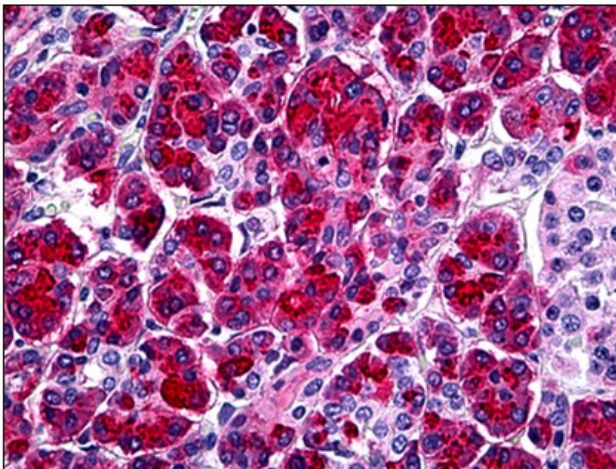
Product images:



SPINK1 monoclonal antibody clone 4D4. Western Blot analysis of SPINK1 expression in human pancreas.



Detection limit for recombinant GST tagged SPINK1 is 0.03 ng/ml as a capture antibody.



Human Pancreas: Formalin-Fixed, Paraffin-Embedded (FFPE)