

Product datasheet for **AM31022PU-N**

STAT4 Mouse Monoclonal Antibody [Clone ID: 1C2-1C12]

Product data:

Product Type:	Primary Antibodies
Clone Name:	1C2-1C12
Applications:	ELISA, IF, IHC, IP, WB
Recommended Dilution:	ELISA. Immunofluorescence: 10 µg/ml. Immunohistochemistry on Paraffin Sections: 5 µg/ml. Immunoprecipitation. Western Blot.
Reactivity:	Human
Host:	Mouse
Isotype:	IgG1
Clonality:	Monoclonal
Immunogen:	STAT4 antibody was raised against recombinant protein
Specificity:	This antibody reacts to STAT4.
Formulation:	PBS, pH 7.2 State: Purified State: Liquid purified Ig fraction
Concentration:	lot specific
Purification:	Protein A chromatography
Conjugation:	Unconjugated
Storage:	Store the antibody undiluted at 2-8°C for one month or (in aliquots) at -20°C for longer. Avoid repeated freezing and thawing.
Stability:	Shelf life: one year from despatch.
Gene Name:	signal transducer and activator of transcription 4
Database Link:	Entrez Gene 6775 Human Q14765



[View online »](#)

Background:

STAT4 is a transcription factor involved in promoting cell-mediated immunity. It is a key molecule in the intracellular signal transduction cascade activated in response to IL-12 stimulation. Following phosphorylation in response to IL-12 or IFN-alpha STAT4 dimerizes, translocates to the nucleus, and activates gene expression.

Synonyms:

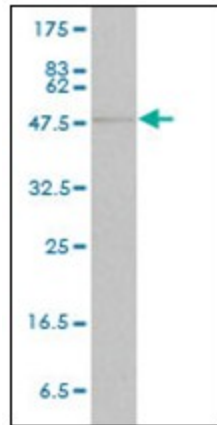
OTTHUMP00000163553; SLEB11

Protein Families:

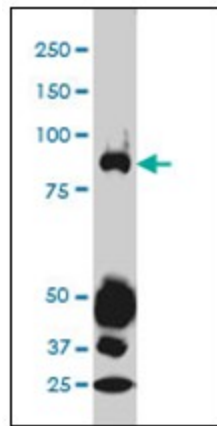
Druggable Genome, Transcription Factors

Protein Pathways:

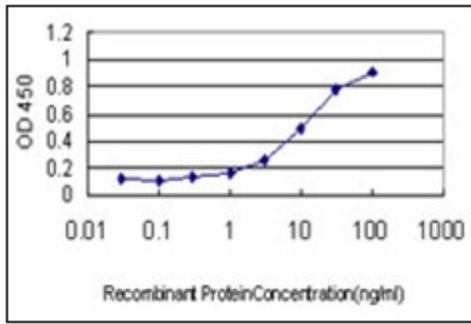
Jak-STAT signaling pathway

Product images:

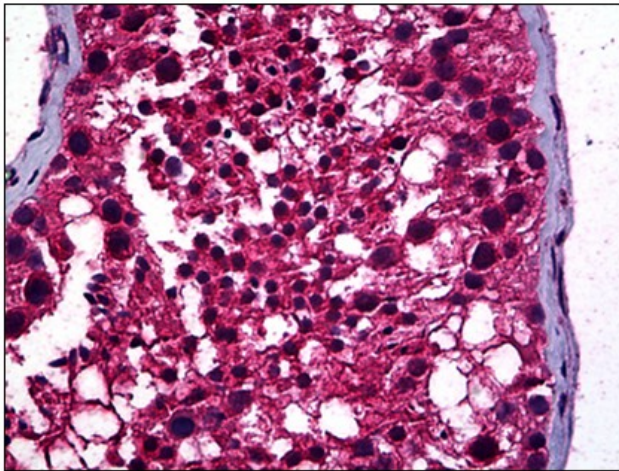
STAT4 monoclonal antibody clone 1C2-1C12.
Western Blot analysis of STAT4 expression in human liver.



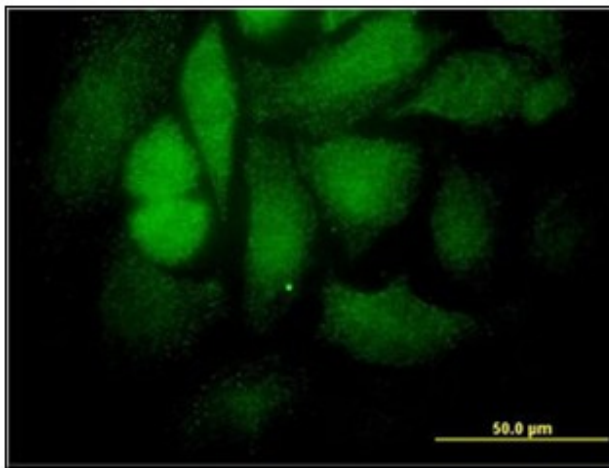
STAT4 monoclonal antibody clone 1C2-1C12
Western Blot analysis of STAT4 expression in A-549.



Detection limit for recombinant GST tagged STAT4 is approximately 0.3ng/ml as a capture antibody.



Human Testis: Formalin-Fixed, Paraffin-Embedded (FFPE)



Immunofluorescence of monoclonal antibody to STAT4 on HeLa cell. [antibody concentration 10 ug/ml]