

## Product datasheet for **AM31021PU-N**

### STAT5B Mouse Monoclonal Antibody [Clone ID: 2D1]

#### Product data:

Product Type:	Primary Antibodies
Clone Name:	2D1
Applications:	ELISA, IF, IHC, WB
Recommended Dilution:	<b>ELISA.</b> <b>Immunofluorescence:</b> 10 µg/ml. <b>Immunohistochemistry on Paraffin Sections:</b> 5 µg/ml. <b>Western Blot.</b>
Reactivity:	Human
Host:	Mouse
Isotype:	IgG1
Clonality:	Monoclonal
Immunogen:	STAT5B antibody was raised against recombinant protein
Specificity:	This antibody reacts to STAT5B.
Formulation:	PBS, pH 7.2 State: Purified State: Liquid purified Ig fraction
Concentration:	lot specific
Purification:	Protein A chromatography
Conjugation:	Unconjugated
Storage:	Store the antibody undiluted at 2-8°C for one month or (in aliquots) at -20°C for longer. Avoid repeated freezing and thawing.
Stability:	Shelf life: one year from despatch.
Gene Name:	signal transducer and activator of transcription 5B
Database Link:	<a href="#">Entrez Gene 6777 Human</a> <a href="#">P51692</a>
Synonyms:	STAT-5B

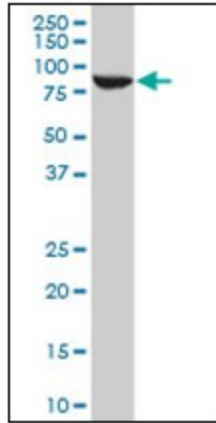


[View online »](#)

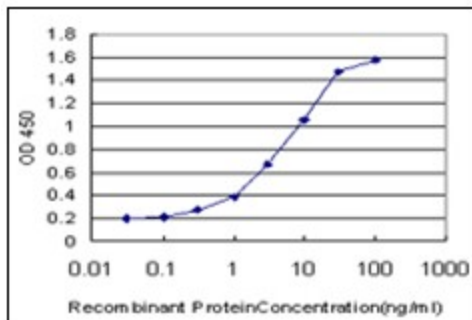
**Protein Families:** Druggable Genome, ES Cell Differentiation/IPS, Stem cell relevant signaling - JAK/STAT signaling pathway, Transcription Factors

**Protein Pathways:** Acute myeloid leukemia, Chemokine signaling pathway, Chronic myeloid leukemia, ErbB signaling pathway, Jak-STAT signaling pathway, Pathways in cancer

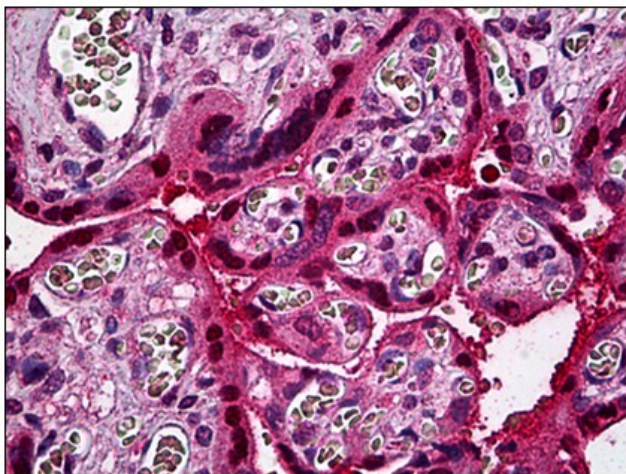
**Product images:**



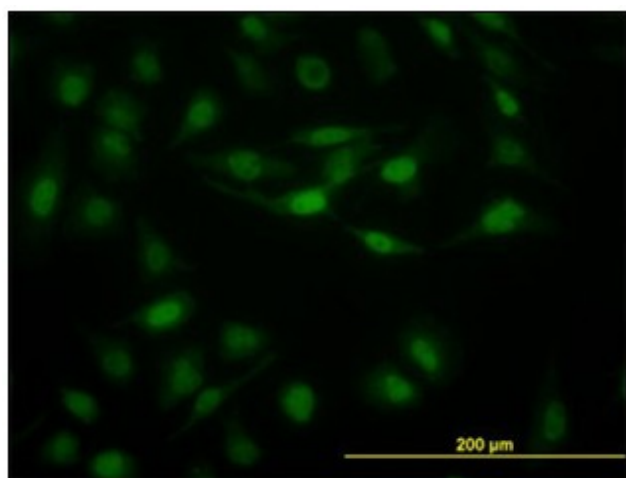
STAT5B monoclonal antibody clone 2D1 Western Blot analysis of STAT5B expression in HeLa.



Detection limit for recombinant GST tagged STAT5B is approximately 0.3ng/ml as a capture antibody.



Human Placenta: Formalin-Fixed, Paraffin-Embedded (FFPE)



Immunofluorescence of monoclonal antibody to STAT5B on HeLa cell. [antibody concentration 10 ug/ml]