

## Product datasheet for **AM31018PU-N**

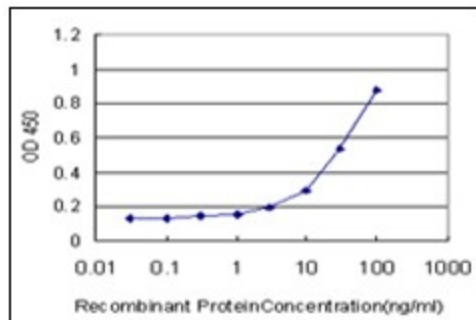
### Synaptotagmin 1 (SYT1) Mouse Monoclonal Antibody [Clone ID: 1A6]

#### Product data:

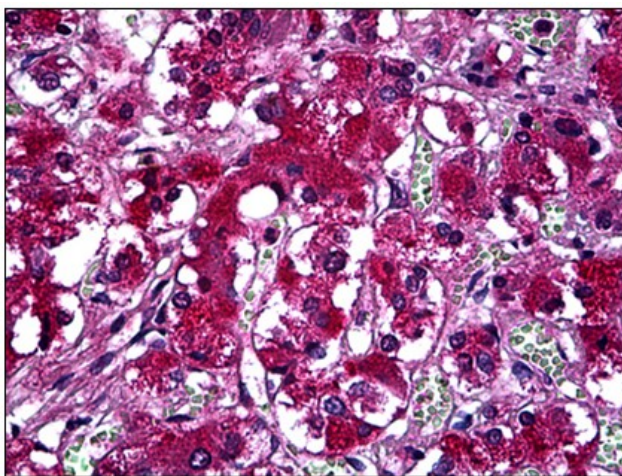
|                       |   |
|-----------------------|---|
| Product Type:         | Primary Antibodies  |
| Clone Name:           | 1A6   |
| Applications:         | ELISA, IHC, WB  |
| Recommended Dilution: | <b>ELISA.</b><br><b>Immunohistochemistry on Paraffin Sections:</b> 5 µg/ml.<br><b>Western Blot.</b>                               |
| Reactivity:           | Human   |
| Host:                 | Mouse   |
| Isotype:              | IgG2a   |
| Clonality:            | Monoclonal  |
| Immunogen:            | SYT1 antibody was raised against recombinant protein  |
| Specificity:          | This antibody reacts to SYT1 / Synaptotagmin.   |
| Formulation:          | PBS, pH 7.2<br>State: Purified<br>State: Liquid purified Ig fraction  |
| Concentration:        | lot specific  |
| Purification:         | Protein A chromatography  |
| Conjugation:          | Unconjugated  |
| Storage:              | Store the antibody undiluted at 2-8°C for one month or (in aliquots) at -20°C for longer.<br>Avoid repeated freezing and thawing. |
| Stability:            | Shelf life: one year from despatch.   |
| Gene Name:            | synaptotagmin 1   |
| Database Link:        | <a href="#">Entrez Gene 6857 Human P21579</a>   |
| Synonyms:             | SYT1, SVP65, SYT, Synaptotagmin1, Synaptotagmin I, SytI, p65  |
| Protein Families:     | Secreted Protein, Transmembrane   |



[View online »](#)

**Product images:**

Detection limit for recombinant GST tagged SYT1 is approximately 1 ng/ml as a capture antibody.



Human Adrenal: Formalin-Fixed, Paraffin-Embedded (FFPE)