

Product datasheet for **AM31014PU-N**

TSG101 (201-281) Mouse Monoclonal Antibody [Clone ID: 5B7]

Product data:

Product Type:	Primary Antibodies
Clone Name:	5B7
Applications:	ELISA, IF, IHC, WB
Recommended Dilution:	ELISA. Immunofluorescence: 10 µg/ml. Immunohistochemistry on Paraffin Sections: 5 µg/ml. Western Blot: 1/500 - 1/1000.
Reactivity:	Human
Host:	Mouse
Isotype:	IgG2a
Clonality:	Monoclonal
Immunogen:	TSG101 (NP_006283, 201 a.a. ~ 281 a.a) partial recombinant protein with GST tag. MW of the GST tag alone is 26 KDa.
Specificity:	This antibody reacts to TSG101.
Formulation:	PBS, pH 7.4 State: Purified State: Liquid purified Ig fraction
Concentration:	lot specific
Purification:	Protein A chromatography
Conjugation:	Unconjugated
Storage:	Store the antibody undiluted at 2-8°C for one month or (in aliquots) at -20°C for longer. Avoid repeated freezing and thawing.
Stability:	Shelf life: one year from despatch.
Gene Name:	tumor susceptibility 101
Database Link:	Entrez Gene 7251 Human Q99816



[View online »](#)

Background:

The tumor susceptibility gene 101 (TSG101) was first discovered in a screen for potential tumor suppressors. Altered transcripts of this gene have been detected in sporadic breast carcinomas and other malignancies. In mice the gene has been shown to be essential for growth, proliferation and survival of mammary epithelial cells. TSG101 is also a component of the ESCRt-1 complex, a regulator of the vesicular trafficking process. In addition it is required for the sorting of endocytic ubiquitinated cargos into multivesicular bodies and is involved the budding of many viruses.

Synonyms:

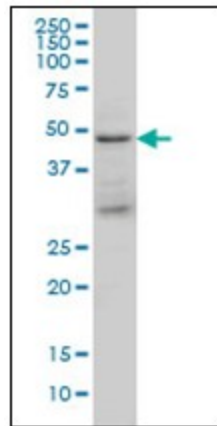
TSG10; VPS23

Protein Families:

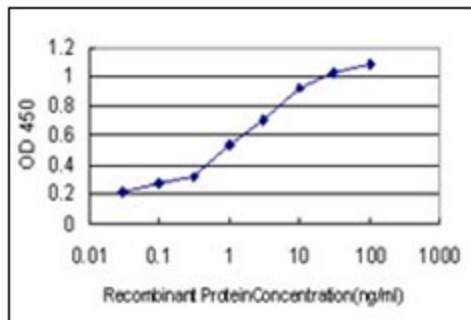
Druggable Genome, Transcription Factors

Protein Pathways:

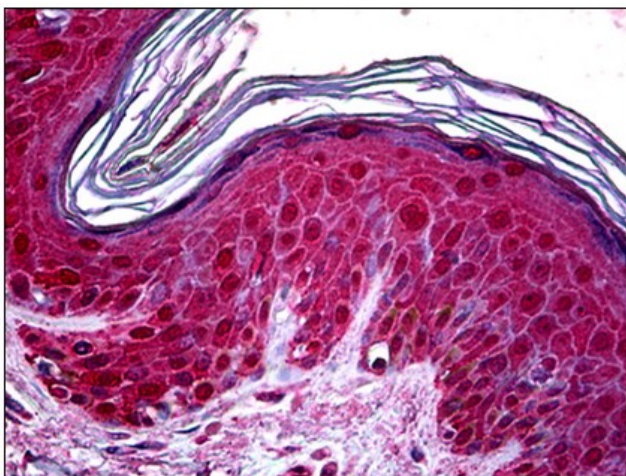
Endocytosis

Product images:


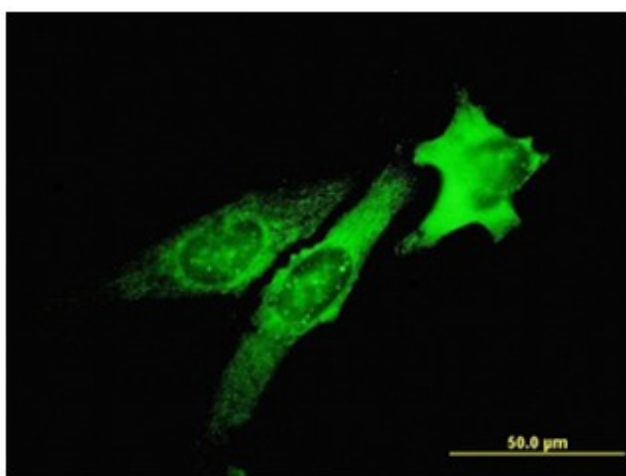
TSG101 monoclonal antibody clone 5B7 Western Blot analysis of TSG101 expression in K-562.



Detection limit for recombinant GST tagged TSG101 is approximately 0.03ng/ml as a capture antibody.



Human Skin: Formalin-Fixed, Paraffin-Embedded (FFPE)



Immunofluorescence of monoclonal antibody to TSG101 on HeLa cell. [antibody concentration 10 ug/ml]