

## Product datasheet for **AM31003PU-N**

### beta III Tubulin (TUBB3) (436-450) Mouse Monoclonal Antibody [Clone ID: n.a]

#### Product data:

Product Type:	Primary Antibodies
Clone Name:	n.a
Applications:	IF, IHC, WB
Recommended Dilution:	<b>Immunocytochemistry.</b> <b>Immunohistochemistry on Paraffin Sections:</b> 10 µg/ml. <b>Western Blot:</b> 0.05 - 1 µg/ml. Proteins were visualized using a goat anti-mouse secondary antibody conjugated to HRP and a chemiluminescence detection system.
Reactivity:	Bovine, Human, Mouse, Rat, Canine, Monkey, Porcine
Host:	Mouse
Isotype:	IgG2a
Clonality:	Monoclonal
Immunogen:	Synthetic peptide corresponding to amino acids 436-450 of neuronal specific beta3 tubulin (KLH coupled).
Specificity:	Recognizes Human neuronal specific beta-3 Tubulin at aa 436-450.
Formulation:	0.01M Sodium Phosphate, pH 7.0, 0.01M EDTA, 0.15M Sodium Chloride State: Purified State: Liquid purified Ig fraction
Concentration:	lot specific
Purification:	Protein G Chromatography
Conjugation:	Unconjugated
Storage:	Store undiluted at 2-8°C for one month or (in aliquots) at -20°C for longer. Avoid repeated freezing and thawing.
Stability:	Shelf life: one year from despatch.
Gene Name:	tubulin beta 3 class III
Database Link:	<a href="#">Entrez Gene 22152 Mouse</a> <a href="#">Entrez Gene 246118 Rat</a> <a href="#">Entrez Gene 10381 Human Q13509</a>



[View online »](#)

**Background:**

The beta-3 Tubulin isotype is present dominantly in cells of neuronal origin and it is one of the earliest marker of neuronal differentiation. Class III beta-tubulin, is regarded as a specific probe for the cells of neuronal origin as well as for the tumours originating from these cells. The neuron-associated class III beta-tubulin isotype is most abundant in cells of neuronal origin but was also detected in Sertoli cells of the testis and transiently in non-neuronal embryonic tissues.

**Synonyms:**

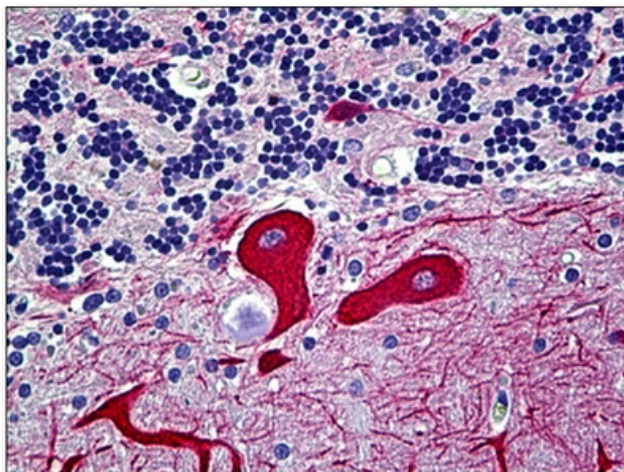
Tubulin beta-3 chain, Tubulin beta-III, Tubulin beta-4

**Protein Families:**

Druggable Genome, ES Cell Differentiation/IPS

**Protein Pathways:**

Gap junction, Pathogenic Escherichia coli infection

**Product images:**

Human Brain, Cerebellum: Formalin-Fixed, Paraffin-Embedded (FFPE)