

Product datasheet for **AM26791RP-N**

CD68 Mouse Monoclonal Antibody [Clone ID: Y1/82A]

Product data:

Product Type:	Primary Antibodies
Clone Name:	Y1/82A
Applications:	FC
Recommended Dilution:	Flow cytometry analysis of human blood cells using 10 µl reagent / 100 µl of whole blood or 10 ⁶ cells in a suspension. The content of a vial (1 ml) is sufficient for 100 tests.
Reactivity:	Human
Host:	Mouse
Isotype:	IgG2b
Clonality:	Monoclonal
Immunogen:	Lysosomal contents of lung macrophages
Specificity:	This antibody CD68 (LAMP4), a 110 kDa glycoprotein expressed mainly in cytoplasmic granules of monocytes/macrophages, granulocytes, and dendritic cells.
Formulation:	Phosphate buffered saline (PBS) Label: PE State: Liquid Ig fraction Stabilizer: 0.2% (w/v) high-grade protease free Bovine Serum Albumin (BSA) Preservative: 15 mM sodium azide Label: Conjugated with R-Phycoerythrin (PE) under optimum conditions. The conjugate is purified by size-exclusion chromatography and adjusted for direct use. No reconstitution is necessary.
Conjugation:	PE
Storage:	Store the antibody undiluted at 2-8°C. DO NOT FREEZE! This product is photosensitive and should be protected from light.
Stability:	Shelf life: one year from despatch.
Gene Name:	CD68 molecule
Database Link:	Entrez Gene 968 Human P34810



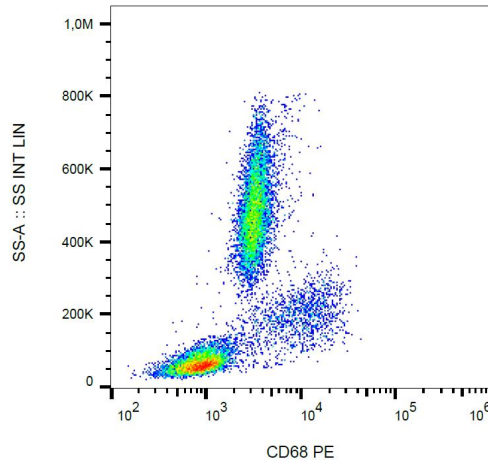
[View online »](#)

Background:

CD68 (also known as LAMP4 or SCARD1) is a 110 kDa type I transmembrane glycoprotein of the lysosomal/endosomal-associated membrane glycoprotein (LAMP) family and the scavenger receptor family. Although CD68 primarily localizes to lysosomes and endosomes, its fraction circulates to the cell surface. By the heavily glycosylated extracellular domain CD68 binds to tissue- and organ-specific lectins or selectins. It is expressed mainly in cytoplasmic granules of monocytes/macrophages, granulocytes, and dendritic cells, but also e.g. in a proportion of epithelial tumours (diagnosis of poorly differentiated neoplasms).

Synonyms:

Gp110, Macrosialin, Macrophage marker

Product images:

Intracellular staining of human peripheral blood cells with anti-CD68 (Y1/82A) PE.