

Product datasheet for **AM26780PU-N**

Bone marrow stromal cell antigen 1 (BST1) Mouse Monoclonal Antibody [Clone ID: SY11B5]

Product data:

Product Type:	Primary Antibodies
Clone Name:	SY11B5
Applications:	FC, IHC, IP, WB
Recommended Dilution:	Flow cytometry. Immunoprecipitation. Western blot: non-reducing conditions. Immunohistochemistry (frozen sections).
Reactivity:	Human, Primate
Host:	Mouse
Isotype:	IgG1
Clonality:	Monoclonal
Immunogen:	Human CD157
Specificity:	This antibody recognizes CD157, an approximately 45 kDa GPI-anchored protein expressed mainly on monocytes, macrophages, granulocytes and bone marrow stromal cells.
Formulation:	Phosphate buffered saline (PBS) State: Purified State: Liquid Ig fraction Preservative: 15 mM sodium azide, approx. pH 7.4
Concentration:	lot specific
Purification:	Protein-A affinity chromatography (> 95% pure by SDS-PAGE)
Conjugation:	Unconjugated
Storage:	Store undiluted at 2-8°C. DO NOT FREEZE!
Stability:	Shelf life: one year from despatch.
Gene Name:	bone marrow stromal cell antigen 1
Database Link:	Entrez Gene 683 Human Q10588



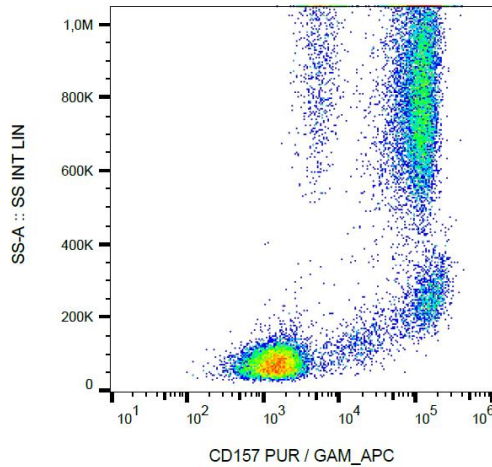
[View online »](#)

Background:

CD157 (cADPr hydrolase 2) is a GPI-anchored ectoenzyme possessing ADP-ribosyl cyclase and cyclic ADP-ribose hydrolase activity. It uses NAD and cADP-ribose as substrates. CD157 is expressed on granulocytes, monocytes, macrophages, follicular dendritic cells, bone marrow stromal cells and human umbilical cord vein endothelial cells. In case of rheumatoid arthritis is expression is often higher and it is also differentially expressed in the myeloid leukemias. It may also have a signaling role.

Synonyms:

cADPr hydrolase 2, BST-1

Product images:

Surface staining of human peripheral blood leukocytes with anti-human CD157 (SY11B5) purified / GAM-APC.