

Product datasheet for **AM26768RP-N**

OPA1L (WBP1L) (152-342) Mouse Monoclonal Antibody [Clone ID: OPAL1-01]

Product data:

Product Type:	Primary Antibodies
Clone Name:	OPAL1-01
Applications:	FC, WB
Recommended Dilution:	Flow cytometry.
Reactivity:	Human
Host:	Mouse
Isotype:	IgG2a
Clonality:	Monoclonal
Immunogen:	Recombinant fragment of human OPAL1 (amino acids 152-342)
Specificity:	This antibody recognizes OPAL1 (outcome predictor in acute leukemia 1), a transmembrane adaptor protein expressed mainly by megacaryocytes and platelets.
Formulation:	Phosphate buffered saline (PBS) Label: PE State: Liquid purified Ig fraction Stabilizer: 0.2% (w/v) high-grade protease free Bovine Serum Albumin (BSA) Preservative: 15 mM sodium azide Label: Conjugated with R-Phycoerythrin (PE) under optimum conditions. The conjugate was purified by size-exclusion chromatography.
Concentration:	lot specific
Conjugation:	PE
Storage:	Store the antibody undiluted at 2-8°C. DO NOT FREEZE! This product is photosensitive and should be protected from light.
Stability:	Shelf life: one year from despatch.
Gene Name:	WW domain binding protein 1-like
Database Link:	Entrez Gene 54838 Human Q9NX94



[View online »](#)

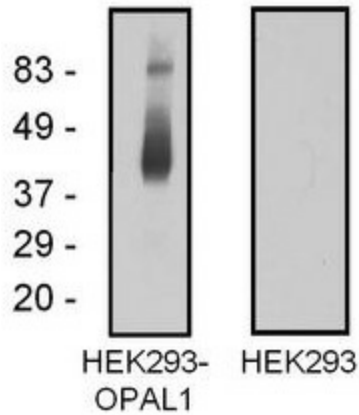
Background:

OPAL1 (outcome predictor in acute leukemia 1) is an almost uncharacterized transmembrane adaptor protein expressed mainly by megacaryocytes and platelets. Its expression is enhanced on TEL/AML leukemic cells. The function of OPAL1 is unknown, although the presence of a cytochrome c-like heme-binding site and a transmembrane domain suggested OPAL1 may be involved in the mitochondrial electron transport chain. Its originally reported prognostic impact appears to be treatment dependent.

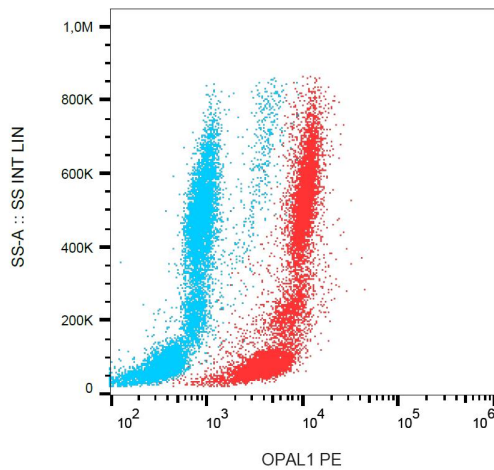
Synonyms:

C10orf26, OPA1L, Outcome predictor in acute leukemia 1

Product images:



Western blot analysis of OPAL1 in OPAL1-transfected HEK293 cells using mouse monoclonal antibody OPAL1-01.



Flow cytometry analysis of OPAL1 in human peripheral blood + lyophilized SP2 cells using mouse monoclonal antibody anti-OPAL1 (OPAL1-01) PE.