

## Product datasheet for **AM26766RP-N**

### CLIC5 (Isoform 1) (160-173) Mouse Monoclonal Antibody [Clone ID: CLIC5-02]

#### Product data:

|                       |  |
|-----------------------|--|
| Product Type:         | Primary Antibodies   |
| Clone Name:           | CLIC5-02   |
| Applications:         | FC, WB   |
| Recommended Dilution: | Flow cytometry.  |
| Reactivity:           | Human  |
| Host:                 | Mouse  |
| Isotype:              | IgG2b  |
| Clonality:            | Monoclonal   |
| Immunogen:            | KLH-conjugated peptide corresponding to the amino acids 160-173 of human CLIC5a  |
| Specificity:          | This antibody recognizes CLIC5a, a 32 kDa protein which is component of actin complexes. Crossreactivity with CLIC5b was not determined.   |
| Formulation:          | Phosphate buffered saline (PBS)<br>Label: PE<br>State: Liquid purified Ig fraction<br>Stabilizer: 0.2% (w/v) high-grade protease free Bovine Serum Albumin (BSA)<br>Preservative: 15 mM sodium azide<br>Label: Conjugated with R-Phycoerythrin (PE) under optimum conditions. The conjugate was purified by size-exclusion chromatography. |
| Concentration:        | lot specific   |
| Conjugation:          | PE   |
| Storage:              | Store undiluted at 2-8°C.<br><b>DO NOT FREEZE!</b><br>This product is photosensitive and should be protected from light.<br>Avoid repeated freezing and thawing.   |
| Stability:            | Shelf life: one year from despatch.  |
| Gene Name:            | chloride intracellular channel 5   |
| Database Link:        | <a href="#">Entrez Gene 53405 Human</a><br><a href="#">Q9NZA1</a>  |



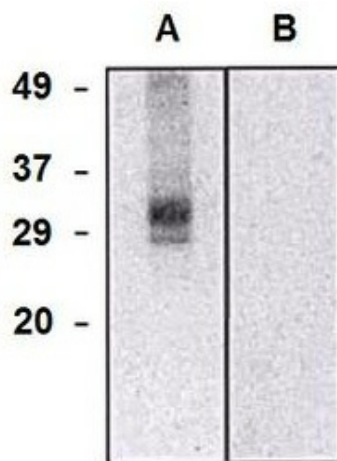
[View online »](#)

**Background:**

CLIC5a belongs to the family of chloride intracellular channel (CLIC) proteins, all sharing a highly conserved C terminus and variable N terminus. Human CLIC5 is transcribed in two isoforms, 32 kDa CLIC5a (251 amino acids) and 49 kDa CLIC5b (410 amino acids). These proteins exist in a soluble form and their function as ion channels in vitro has not been fully confirmed in vivo. CLIC5a is a component of complexes of actin, ezrin, and several other actin-associated proteins and is important for functionality of actin-based structures.

**Synonyms:**

Chloride intracellular channel protein 5

**Product images:**

Western blot analysis of CLIC5a in HEK293-CLIC5a transfectants (A) and HEK293 cells (B) using mouse monoclonal antibody (clone CLIC5-02).