

Product datasheet for **AM26766PU-N**

CLIC5 (Isoform 1) (160-173) Mouse Monoclonal Antibody [Clone ID: CLIC5-02]

Product data:

Product Type:	Primary Antibodies
Clone Name:	CLIC5-02
Applications:	FC, WB
Recommended Dilution:	Flow cytometry. Western blot.
Reactivity:	Human
Host:	Mouse
Isotype:	IgG2b
Clonality:	Monoclonal
Immunogen:	KLH-conjugated peptide corresponding to the amino acids 160-173 of human CLIC5a
Specificity:	This antibody recognizes CLIC5a, a 32 kDa protein which is component of actin complexes. Cross reactivity with CLIC5b was not determined.
Formulation:	Phosphate buffered saline (PBS) State: Purified State: Liquid Ig fraction Preservative: 15 mM sodium azide, approx. pH 7.4
Concentration:	lot specific
Purification:	Protein-A affinity chromatography (> 95% by SDS-PAGE)
Conjugation:	Unconjugated
Storage:	Store undiluted at 2-8°C. DO NOT FREEZE!
Stability:	Shelf life: one year from despatch.
Gene Name:	chloride intracellular channel 5
Database Link:	Entrez Gene 53405 Human Q9NZA1



[View online »](#)

Background:

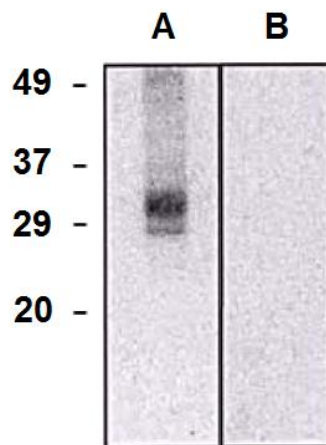
CLIC5a belongs to the family of chloride intracellular channel (CLIC) proteins, all sharing a highly conserved C terminus and variable N terminus. Human CLIC5 is transcribed in two isoforms, 32 kDa CLIC5a (251 amino acids) and 49 kDa CLIC5b (410 amino acids). These proteins exist in a soluble form and their function as ion channels in vitro has not been fully confirmed in vivo. CLIC5a is a component of complexes of actin, ezrin, and several other actin-associated proteins and is important for functionality of actin-based structures.

Synonyms:

Chloride intracellular channel protein 5

Note:

Protocol: 1. Wegner B, Al-Momany A, Kulak SC, Kozlowski K, Obeidat M, Jahroudi N, Paes J, Berryman M, Ballermann BJ: CLIC5A, a component of the ezrin-podocalyxin complex in glomeruli, is a determinant of podocyte integrity. *Am J Physiol Renal Physiol.* 2010 Jun;298(6):F1492-503.

Product images:

Western blotting analysis of CLIC5a in HEK293-CLIC5a transfectants (A) and HEK293 cells (B) using mouse monoclonal antibody (clone CLIC5-02).