

## Product datasheet for **AM26764RP-N**

### **LARGE (LARGE1) (35-142) Mouse Monoclonal Antibody [Clone ID: LARGE-02]**

#### **Product data:**

Product Type:	Primary Antibodies
Clone Name:	LARGE-02
Applications:	FC, WB
Recommended Dilution:	<b>Flow cytometry.</b>
Reactivity:	Human
Host:	Mouse
Isotype:	IgG2b
Clonality:	Monoclonal
Immunogen:	Recombinant fragment of human LARGE1 (amino acids 35-142)
Specificity:	This antibody recognizes human LARGE1, a glycosyltransferase localizing mainly to the Golgi apparatus. Crossreactivity with LARGE2 was not determined.
Formulation:	Phosphate buffered saline (PBS) Label: PE State: Liquid purified Ig fraction Stabilizer: 0.2% (w/v) high-grade protease free Bovine Serum Albumin (BSA) Preservative: 15 mM sodium azide Label: Conjugated with R-Phycoerythrin (PE) under optimum conditions. The conjugate was purified by size-exclusion chromatography.
Conjugation:	PE
Storage:	Store the antibody at 2-8°C. <b>DO NOT FREEZE!</b> This product is photosensitive and should be protected from light.
Stability:	Shelf life: one year from despatch.
Gene Name:	LARGE xylosyl- and glucuronyltransferase 1
Database Link:	<a href="#">Entrez Gene 9215 Human O95461</a>



[View online »](#)

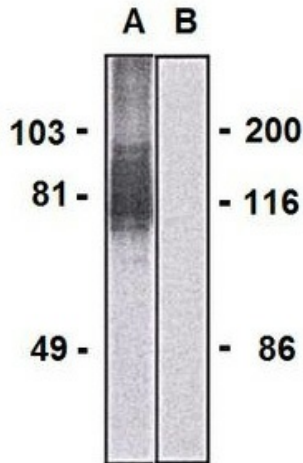
**Background:**

LARGE1 serves as a glycosyltransferase which participates in glycosylation of the muscle membrane protein alpha-dystroglycan. Mutations of LARGE1 lead to hypoglycosylation of alpha-dystroglycan and cause congenital muscular dystrophy (MDC1D) associated with severe mental retardation. Altered alpha-dystroglycan glycosylation may also play a role in cancer, as hypoglycosylation of the protein and loss of laminin binding have been demonstrated in invasive carcinoma cells.

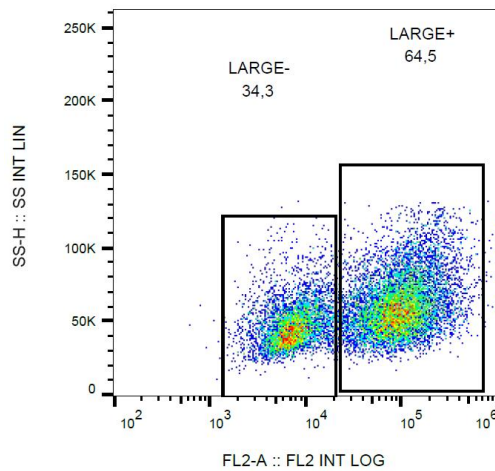
**Synonyms:**

LARGE, KIAA0609, LARGE1, Glycosyltransferase-like protein LARGE1, Acetylglucosaminyltransferase-like 1A

**Product images:**



Western blotting analysis of LARGE1 in HEK293-LARGE1 transfectants (A) and HEK293 cells (B) using mouse monoclonal antibody (clone LARGE-02).



Flow cytometry analysis of LARGE1 in HEK293-LARGE1 transfectants using mouse monoclonal antibody (clone LARGE-02) PE.