

Product datasheet for **AM26760BT-N**

IL2 Receptor alpha (IL2RA) Mouse Monoclonal Antibody [Clone ID: 143-13]

Product data:

Product Type:	Primary Antibodies
Clone Name:	143-13
Applications:	FC, IHC
Recommended Dilution:	Immunohistochemistry on frozen sections: 10mg/ml (1:40). Suggested positive control: Human tonsil. Has been described to work in FACS.
Reactivity:	Human
Host:	Mouse
Isotype:	IgG1
Clonality:	Monoclonal
Immunogen:	Stimulated human leukocytes
Specificity:	This antibody detects CD25, a 55kD glycoprotein. It recognizes epitope region C of the IL-2 receptor complex.
Formulation:	Phosphate buffered saline pH 7.2 Label: Biotin State: Lyophilized Ig fraction Stabilizer: 5 mg/ml bovine serum albumin (BSA) Preservative: 0.05% (v/v) Kathon CG
Reconstitution Method:	Reconstitute by adding 0.5ml distilled water.
Concentration:	0.4 mg/ml (reconstituted)
Purification:	Affinity purified
Conjugation:	Biotin
Storage:	Store lyophilized at 2-8°C for 6 months or at -20°C long term. After reconstitution store the antibody undiluted at 2-8°C for one month or (in aliquots) at -20°C long term. Avoid repeated freezing and thawing.
Stability:	Shelf life: one year from despatch.
Gene Name:	interleukin 2 receptor subunit alpha



[View online »](#)

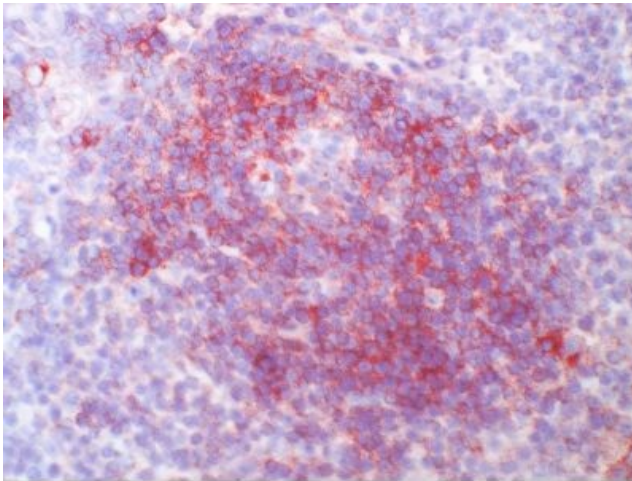
Database Link: [Entrez Gene 3559 Human P01589](#)

Background: IL-2R (T-cell growth factor receptor) consists of a chain of 55kDa (also known as Tac antigen or p55 or α chain) and a p75 or β chain. IL-2R α is over-expressed on the surface of activated Tcells, HTLV-1 or -2 positive T-cell lines, and moderately expressed on activated B-cells, NK-cells, and macrophages. CD25 molecule alone appears to function as a low affinity receptor and associates with CD122 (IL-2R β chain, p75) and CD132 (common γ chain) to form the high affinity IL-2 receptor complex.

Synonyms: Interleukin-2 receptor alpha chain, IL-2 receptor alpha subunit, IL-2-RA, IL2-RA, p55, TAC antigen

Note: **Antigen distribution:**
Isolated cells: The antibody stains less than 5% of resting human peripheral blood mononuclear cells in flow cytometry.
Tissue sections: Scattered large and small lymphocytes in germinal centers, in follicle mantle, and T-zone.

Product images:



: Human tonsil, frozen sections.