

Product datasheet for **AM26758RP-N**

CD300E Mouse Monoclonal Antibody [Clone ID: UP-H2]

Product data:

Product Type:	Primary Antibodies
Clone Name:	UP-H2
Applications:	FC
Recommended Dilution:	Flow Cytometry analysis of human blood cells using 10 µl reagent / 100 µl of whole blood or 10 ⁶ cells in a suspension. The content of a vial (1 ml) is sufficient for 100 tests.
Reactivity:	Human
Host:	Mouse
Isotype:	IgG1
Clonality:	Monoclonal
Immunogen:	CD300e-HA-transfected cells
Specificity:	This antibody recognizes CD300e / IREM-2, a 32 kDa glycoprotein expressed by mature monocytes and peripheral blood myeloid dendritic cells.
Formulation:	Phosphate buffered saline (PBS) Label: PE State: Liquid purified Ig fraction Stabilizer: Phosphate buffered saline (PBS) Preservative: Containing 15 mM sodium azide Label: Conjugated with R-Phycoerythrin (PE) under optimum conditions. The conjugate is purified by size-exclusion chromatography and adjusted for direct use.
Conjugation:	PE
Storage:	Store undiluted at 2-8°C. Do not freeze! This product is photosensitive and should be protected from light. Avoid repeated freezing and thawing.
Stability:	Shelf life: one year from despatch.
Gene Name:	CD300e molecule
Database Link:	Entrez Gene 342510 Human Q496F6



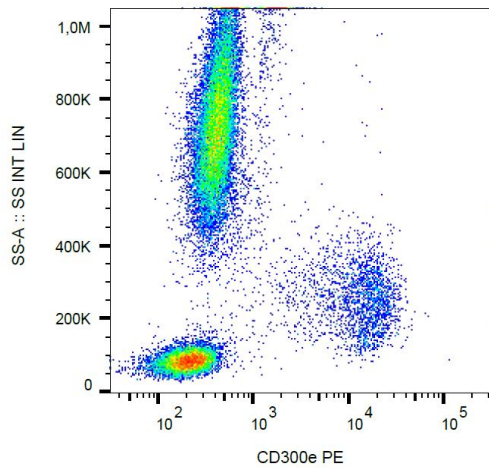
[View online »](#)

Background:

CD300e / IREM-2 (immune receptor expressed by myeloid cells 2), also known as CLM2 or LMIR6, is a monomeric transmembrane glycoprotein with a single extracellular immunoglobulin-like domain. Intracellularly it associates with DAP-12, an ITAM-containing adaptor molecule. CD300e is expressed on mature monocytes and peripheral blood myeloid dendritic cells. Its crosslinking leads to release of pro-inflammatory cytokines, and increased expression of activation markers.

Synonyms:

CLM-2, CD300LE, CLM2, IREM2, CMRF35-A5

Product images:

Surface staining of human peripheral blood with anti-human CD300e (UP-H2) PE.