

## Product datasheet for **AM26758AC-N**

### CD300E Mouse Monoclonal Antibody [Clone ID: UP-H2]

#### Product data:

Product Type:	Primary Antibodies
Clone Name:	UP-H2
Applications:	FC
Recommended Dilution:	<b>Flow Cytometry analysis</b> of human blood cells using 10 µl reagent / 100 µl of whole blood or 10 <sup>6</sup> cells in a suspension. The content of a vial (1 ml) is sufficient for 100 tests.
Reactivity:	Human
Host:	Mouse
Isotype:	IgG1
Clonality:	Monoclonal
Immunogen:	CD300e-HA-transfected cells
Specificity:	This antibody recognizes CD300e / IREM-2, a 32 kDa glycoprotein expressed by mature monocytes and peripheral blood myeloid dendritic cells.
Formulation:	Phosphate buffered saline (PBS) Label: APC State: Liquid purified Ig fraction Stabilizer: 0.2% (w/v) high-grade protease free BSA Preservative: 15 mM Sodium Azide Label: Conjugated with cross-linked Allophycocyanin (APC) under optimum conditions. The conjugate is purified by size-exclusion chromatography and adjusted for direct use.
Conjugation:	APC
Storage:	Store the antibody at 2-8°C. <b>DO NOT FREEZE!</b> This product is photosensitive and should be protected from light.
Stability:	Shelf life: one year from despatch.
Gene Name:	CD300e molecule
Database Link:	<a href="#">Entrez Gene 342510 Human Q496F6</a>



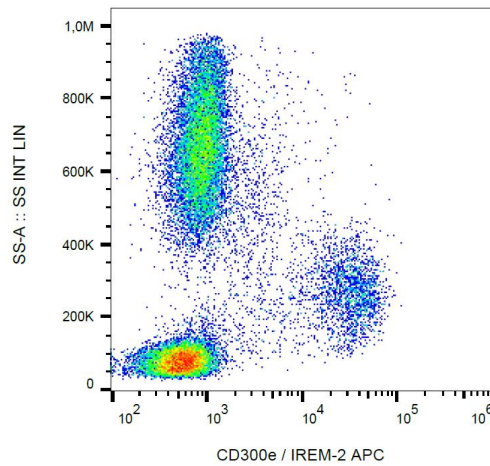
[View online »](#)

**Background:**

CD300e / IREM-2 (immune receptor expressed by myeloid cells 2), also known as CLM2 or LMIR6, is a monomeric transmembrane glycoprotein with a single extracellular immunoglobulin-like domain. Intracellularly it associates with DAP-12, an ITAM-containing adaptor molecule. CD300e is expressed on mature monocytes and peripheral blood myeloid dendritic cells. Its crosslinking leads to release of pro-inflammatory cytokines, and increased expression of activation markers.

**Synonyms:**

CLM-2, CD300LE, CLM2, IREM2, CMRF35-A5

**Product images:**

Surface staining of human peripheral blood with anti-human CD300e (UP-H2) APC.