

Product datasheet for **AM26752PU-N**

Claudin 6 (CLDN6) Rat Monoclonal Antibody [Clone ID: YD-9H8]

Product data:

Product Type:	Primary Antibodies
Clone Name:	YD-9H8
Applications:	ELISA, FC, WB
Recommended Dilution:	Flow cytometry: 1.2 µg/10 ⁶ cells. ELISA: 1/200-1/400. CELISA: 1/200-1/400. Cell based ELISA with intact, transiently transfected cells: 1/200-1/400.
Reactivity:	Human
Host:	Rat
Isotype:	IgG2b
Clonality:	Monoclonal
Immunogen:	cDNA encoding Human Claudin 9. Selection: based on recognition of the complete native protein expressed on transfected mammalian cells.
Specificity:	This antibody detects Human Claudin-6 and Claudin-9.
Formulation:	PBS, pH 7.2 State: Purified State: Liquid purified Ig fraction Preservative: None
Concentration:	lot specific
Purification:	Protein G Chromatography
Conjugation:	Unconjugated
Storage:	Store undiluted at 2-8°C for one month or (in aliquots) at -20°C for longer. Avoid repeated freezing and thawing.
Stability:	Shelf life: one year from despatch.
Gene Name:	claudin 6
Database Link:	Entrez Gene 9074 Human P56747



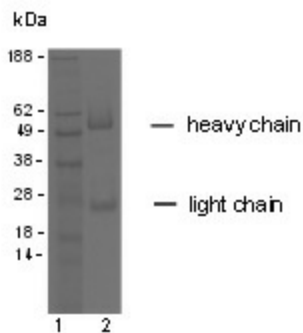
[View online »](#)

Background:

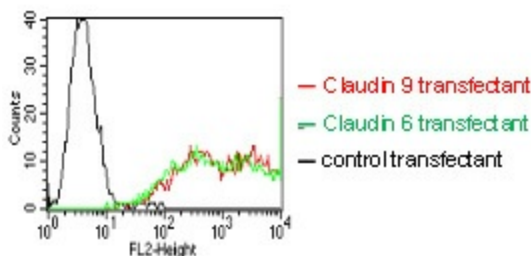
Claudin 6 and Claudin 9 belong to the claudin family which constitutes a large group of four - transmembrane domain proteins (1) . Claudins are integral tight junction proteins that are responsible for maintaining the integrity of epithelial cell architecture, the control of paracellular transport and cell polarity. The expression pattern of claudins is tissue specific, most tissues express multiple claudins, which can interact in both homotypic and heterotypic fashion to form the tight junction strands (2) . Several claudin proteins have been shown to be abnormally expressed in cancers. The differential expression of these proteins between tumour and normal cells, in addition to their membrane localisation, makes them prime candidates for cancer therapy (2). Members of the claudin family, including Claudin 6 and 9 are expressed in the liver and play a critical role in Hepatitis C Infection. They function as coreceptors in HCV entry and assume a role in HCV dissemination, replication and pathogenesis (3).

Synonyms:

CLDN6, PRO1488, Skullin, Skullin 2, UNQ757, CLDN9

Product images:


SDS-PAGE analysis of purified YD-4E9 monoclonal antibody. Lane 1: molecular weight marker, Lane 2: 2 ug of purified YD-4E9 antibody. Proteins were separated by SDS-PAGE and stained with RAPID Stain TM Reagent.



BOSC23 cells were transiently transfected with an expression vector encoding either Claudin 9 (red curve), Claudin 6 (green curve) or an irrelevant protein (control transfected). Binding of YD-9H8 was detected with a PE conjugated secondary antibody. A positive signal was obtained with Claudin 9 and Claudin 6 transfected cells.