

## Product datasheet for **AM26736PU-N**

### MTLRP (GHRL) (N-term) Mouse Monoclonal Antibody [Clone ID: 1ML-1D7]

#### Product data:

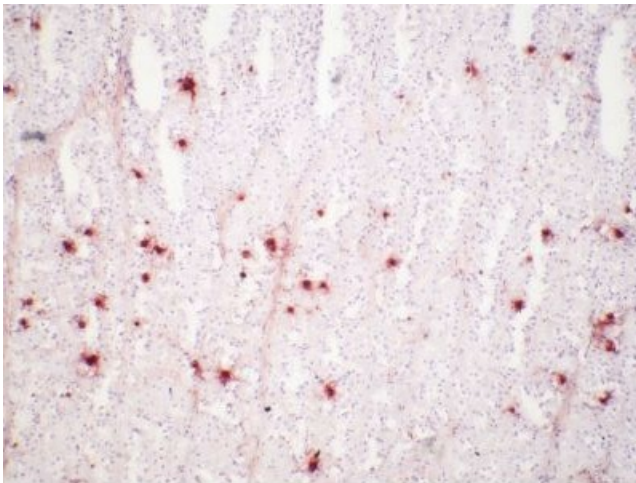
Product Type:	Primary Antibodies
Clone Name:	1ML-1D7
Applications:	IHC
Recommended Dilution:	<b>Immunohistochemistry on Frozen Sections:</b> < 10 µg/ml (1/20). <b>Immunohistochemistry on Paraffin Sections:</b> 10 µg/ml (1/20). Microwave pretreatment in citrate buffer is recommended for antigen retrieval. <b>Suggested Positive Control:</b> Human /porcine stomach.
Reactivity:	Human, Porcine
Host:	Mouse
Isotype:	IgG1
Clonality:	Monoclonal
Immunogen:	Synthetic peptide corresponding to the N-terminal 18 residues of Human Ghrelin.
Specificity:	This antibody recognizes Ghrelin. The epitope is located on the N-terminal side of the peptide.
Formulation:	PBS, pH 7.2 State: Purified State: Lyophilized purified Ig fraction Stabilizer: 5 mg/ml BSA Preservative: 0.01% Kathon
Reconstitution Method:	Restore by adding 0.5 ml distilled water (This stock solution contains 0.2 mg/ml IgG).
Concentration:	0.2 mg/ml (after reconstitution)
Purification:	Affinity Chromatography
Conjugation:	Unconjugated
Storage:	Store lyophilized at 2-8°C for 6 months or at -20°C long term. After reconstitution store the antibody undiluted at 2-8°C for one month or (in aliquots) at -20°C long term. Avoid repeated freezing and thawing.
Stability:	Shelf life: one year from despatch.



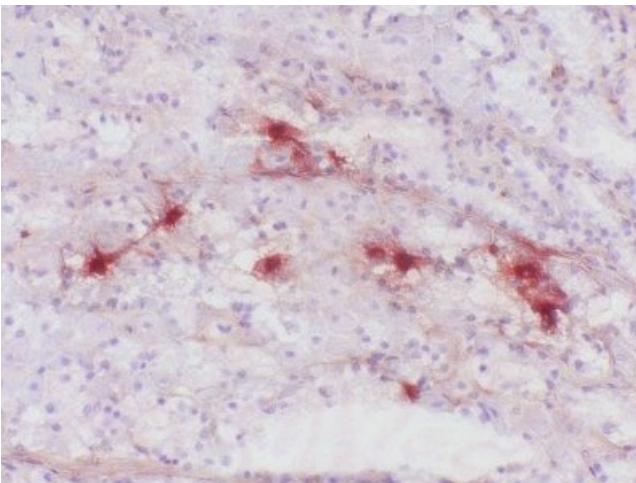
[View online »](#)

Gene Name:	ghrelin/obestatin prepropeptide
Database Link:	<a href="#">Entrez Gene 51738 Human Q9UBU3</a>
Background:	Ghrelin is the only known peripheral orexigenic hormone. It is a 28 amino acid peptide, octanoylated at the serine 3 residue, which is principally secreted from endocrine cells in the stomach. Besides its orexigenic role, ghrelin regulates central and peripheral lipid metabolism through specific control of hypothalamic AMP - activated protein kinase (AMPK), thus regulating both cellular and whole - body energy homeostasis.
Synonyms:	Appetite-regulating hormone, Growth hormone-releasing peptide, Ghrelin-27, Ghrelin-28, Obestatin, Motilin-related peptide, MTLRP

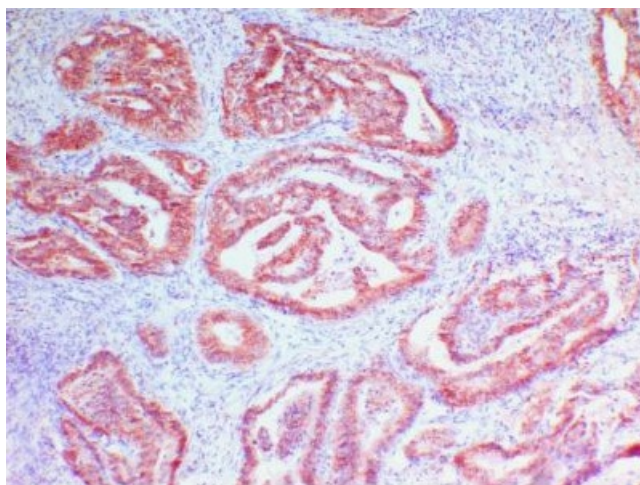
### Product images:



Immunohistochemistry on paraffin sections:  
Swine stomach, stained with.



Immunohistochemistry on paraffin sections:  
Swine stomach, stained with.



Immunohistochemistry on paraffin sections:  
Human gastric carcinoma, stained with.