

Product datasheet for **AM26732PU-N**

GLP1R Mouse Monoclonal Antibody [Clone ID: 1H4]

Product data:

Product Type:	Primary Antibodies
Clone Name:	1H4
Applications:	IHC
Recommended Dilution:	<i>Immunohistochemistry on paraffin sections:</i> 2 µg/ml (1/100); pretreatment with microwave required. <i>Positive control:</i> pancreas / adrenal.
Reactivity:	Human
Host:	Mouse
Isotype:	IgG1
Clonality:	Monoclonal
Immunogen:	DNA vaccine
Specificity:	This antibody detects GLP-1R. The specificity of the antibody was verified by flow cytometry with cells expressing the recombinant protein.
Formulation:	Phosphate buffered saline pH 7.2 (PBS) State: Purified State: Lyophilized affinity purified Ig fraction Stabilizer: 6 mg/ml bovine serum albumin (BSA) Preservative: 0.05% Kathon
Reconstitution Method:	Reconstitute by adding 0.5 ml distilled water.
Concentration:	0.2 mg/ml (after reconstitution)
Purification:	Protein G Chromatography
Conjugation:	Unconjugated
Storage:	Store lyophilized at 2-8°C for 6 month or at -20°C long term. After reconstitution store the antibody undiluted at 2-8°C for one month or (in aliquots) at -20°C long term. Avoid repeated freezing and thawing.
Stability:	Shelf life: one year from despatch.



[View online »](#)

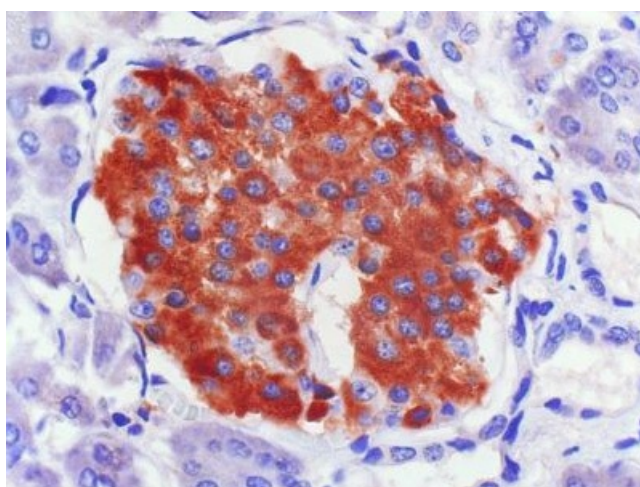
Gene Name: glucagon like peptide 1 receptor

Database Link: [Entrez Gene 2740 Human P43220](#)

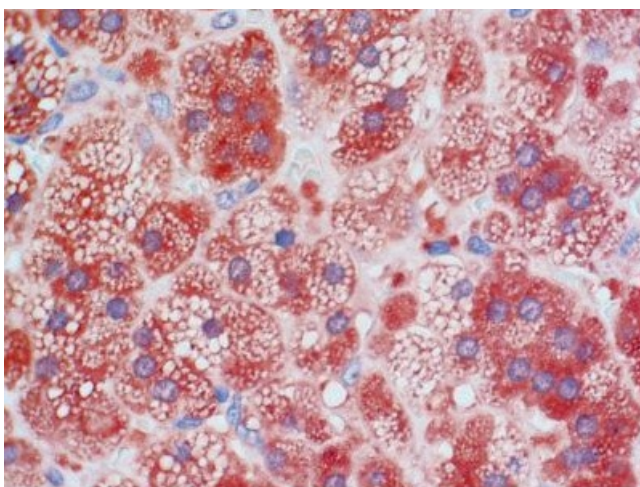
Background: Glucagon - like peptide 1 receptor belongs to the G - protein coupled receptor 2 family. The mature protein is made up of 440 amino acids with four disulfide bonds and three N - linked glycosylation sites. Glucagon - like peptide - 1 (GLP - 1) is a peptide hormone that functions as a messenger between various organs and tissues involved in glucose metabolism, and controls nutrient ingestion. Important sources for GLP - 1 include the intestine and brain stem and hypothalamus, while the receptor (GLP - 1R) is prominently expressed in pancreas, areas of the brain such as the hypothalamus, and peripheral nerves.

Synonyms: Glucagon-like peptide 1 receptor, GLP-1-R, GLP-1R, GLP1R

Product images:



Immunohistochemistry: Human pancreas (paraffin section), stained with AM26732PU-N.



Immunohistochemistry: Human adrenal (paraffin section), stained with AM26732PU-N.