

## Product datasheet for **AM26731PU-N**

### **CX3CR1 Mouse Monoclonal Antibody [Clone ID: 1G4]**

#### **Product data:**

Product Type:	Primary Antibodies
Clone Name:	1G4
Applications:	IHC
Recommended Dilution:	<b>Immunohistochemistry on Paraffin Sections:</b> 2 µg/ml (1/100), pretreatment with proteinase K required. <b>Suggested Positive Control:</b> Human brain cortex.
Reactivity:	Human
Host:	Mouse
Isotype:	IgG2b
Clonality:	Monoclonal
Immunogen:	DNA vaccine
Specificity:	This antibody detects CX3C Receptor 1. The specificity of the antibody was verified by flow cytometry with cells expressing the recombinant protein. The epitope has not been further characterized.
Formulation:	Phosphate buffered saline pH 7.2 (PBS) State: Purified State: Lyophilized purified IgG fraction from Serum-Free Cell Culture Supernatant Stabilizer: 5 mg/ml BSA Preservative: 0.1% Kathon
Reconstitution Method:	Restore by adding 0.5 ml distilled water.
Concentration:	0.2 mg/ml (after reconstitution)
Purification:	Affinity Chromatography on Protein G
Conjugation:	Unconjugated
Storage:	Store lyophilized at 2-8°C for 6 months or at -20°C long term. After reconstitution store the antibody undiluted at 2-8°C for one month or (in aliquots) at -20°C long term. Avoid repeated freezing and thawing.
Stability:	Shelf life: one year from despatch.



[View online »](#)

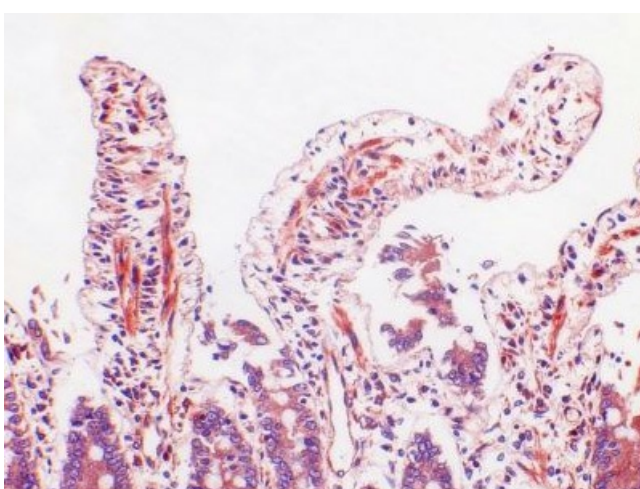
**Gene Name:** C-X3-C motif chemokine receptor 1

**Database Link:** [Entrez Gene 1524 Human P49238](#)

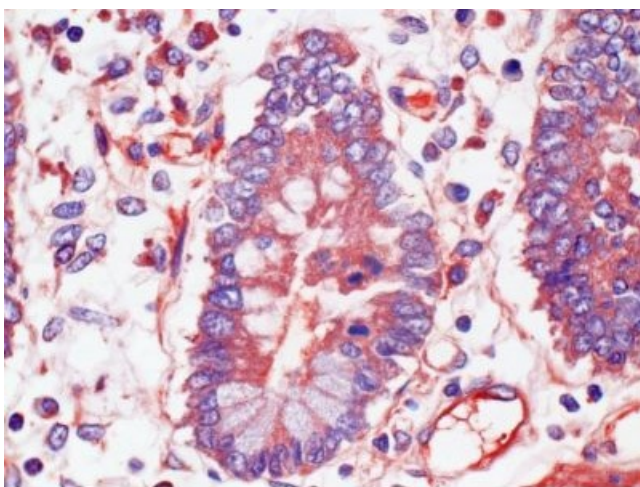
**Background:** G-protein coupled receptor 1 3 (GPR13) is a 355 amino acid protein that belongs to the G - protein coupled receptor 1 family. Biologically, the fractalkine (CX3CL1) to fractalkine receptor (CX3CR1) interactions play an important role in macrophage recruitment to target organs such as the brain, the intestine, the liver or the lungs. Accordingly, expression of the CX3CR1 has been described in inflammation - and tumor - associated macrophages, intestinal lamina propria macrophages, and B cells. Also, CX3CR1 mediates adhesive and migratory functions and acts as a coreceptor with CD4 for HIV - 1 virus gp160 envelope protein.

**Synonyms:** CX3C chemokine receptor 1, C-X3-C CKR-1, CMKBRL1, CMK-BRL-1

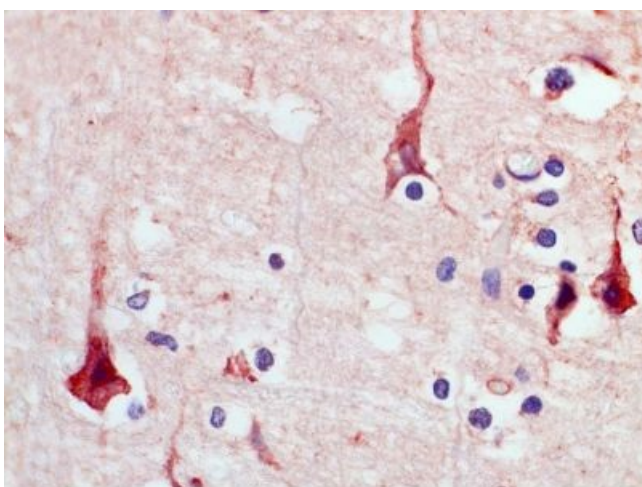
### Product images:



Human small intestine, stained with (Paraffin section).



Human small intestine, stained with (Paraffin section).



Human brain cortex, stained with (Paraffin section).