

## Product datasheet for **AM26726PU-N**

### GPR1 Mouse Monoclonal Antibody [Clone ID: K1G4]

#### Product data:

Product Type:	Primary Antibodies
Clone Name:	K1G4
Applications:	IHC
Recommended Dilution:	<b>Immunohistochemistry on paraffin sections:</b> 10-20 µg/ml (1/25-1/50). <i>Positive control:</i> Human brain cortex.
Reactivity:	Human
Host:	Mouse
Isotype:	IgG2a
Clonality:	Monoclonal
Immunogen:	DNA vaccine
Specificity:	This antibody detects GPR1.
Formulation:	Phosphate buffered saline pH 7.2 (PBS)  State: Purified State: Lyophilized affinity purified Ig fraction Stabilizer: 5 mg/ml bovine serum albumin (BSA) Preservative: 0.1% Kathon
Reconstitution Method:	Reconstitute by adding 0.5 ml distilled water.
Purification:	Protein G
Conjugation:	Unconjugated
Storage:	Store lyophilized at 2-8°C for 6 month or at -20°C long term. After reconstitution store the antibody undiluted at 2-8°C for one month or (in aliquots) at -20°C long term. Avoid repeated freezing and thawing.
Stability:	Shelf life: one year from despatch.
Gene Name:	G protein-coupled receptor 1
Database Link:	<a href="#">Entrez Gene 2825 Human P46091</a>



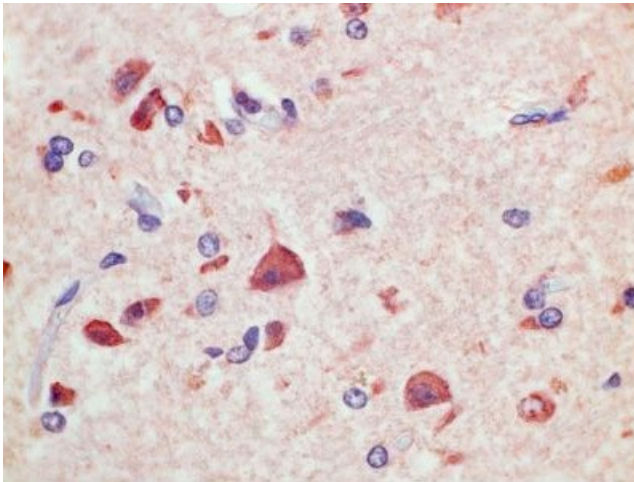
[View online »](#)

**Background:**

GPR1 is a 355 amino acid member of the G - protein coupled receptor 1 family with a seven - transmembrane basic structure. GPR1 is a receptor for the inflammation - associated leukocyte chemoattractant chemerin / RARRES2, suggesting a role for this receptor in the regulation of inflammation. Chemerin is also an adipokine involved in glucose and lipid metabolism. The literature suggests that GPR1 can also act as a coreceptor for HIV - 1.

**Synonyms:**

G-protein coupled receptor 1

**Product images:**

Immunohistochemistry on paraffin sections:  
Human brain cortex stained with AM26726PU-N.