

Product datasheet for **AM26725PU-N**

Melatonin Related Receptor (GPR50) Mouse Monoclonal Antibody [Clone ID: 1A3]

Product data:

Product Type:	Primary Antibodies
Clone Name:	1A3
Applications:	IHC
Recommended Dilution:	Immunohistochemistry on paraffin sections: 5 µg/ml. <i>Positive control: Human placenta.</i>
Reactivity:	Human
Host:	Mouse
Isotype:	IgG1
Clonality:	Monoclonal
Immunogen:	DNA vaccine
Specificity:	This antibody detects Human GPR50.
Formulation:	Phosphate buffered saline pH 7.2 (PBS) State: Purified State: Lyophilized affinity purified Ig fraction Stabilizer: 5 mg/ml bovine serum albumin (BSA) Preservative: 0.1% Kathon
Purification:	Protein G
Conjugation:	Unconjugated
Storage:	Store lyophilized at 2-8°C for 6 month or at -20°C long term. After reconstitution store the antibody undiluted at 2-8°C for one month or (in aliquots) at -20°C long term. Avoid repeated freezing and thawing.
Stability:	Shelf life: one year from despatch.
Gene Name:	G protein-coupled receptor 50
Database Link:	Entrez Gene 9248 Human Q13585



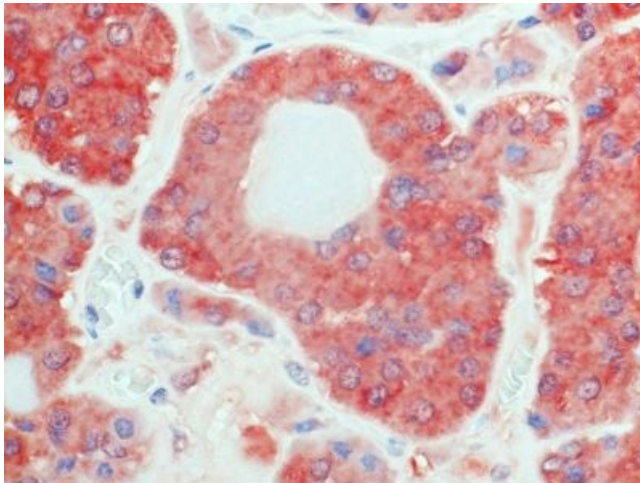
[View online »](#)

Background:

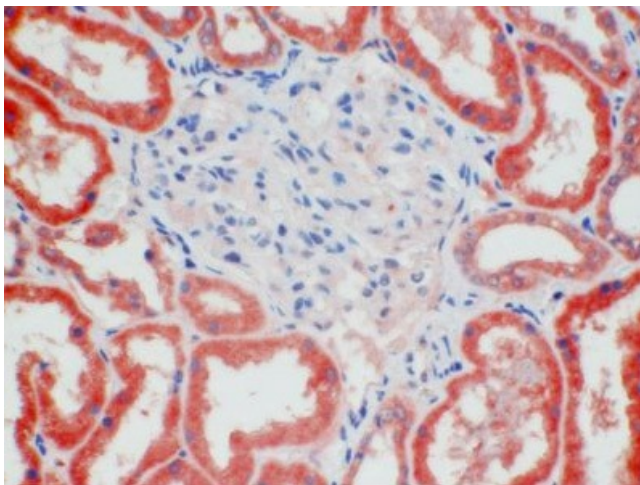
GPR50 or melatonin-related receptor is a 617 amino acid protein that belongs to the G-protein coupled receptor 1 family, containing one disulfide bond. GPR50 does not bind melatonin and its endogenous ligand is still unknown. Nevertheless, this receptor has been shown to behave as an antagonist of the melatonin receptor MT 1. GPR50 has been identified as a genetic risk factor for bipolar disorder and major depression in women, and it has been linked to neurite outgrowth, lipid metabolism, stress response and energy homeostasis and torpor. Its expression seems to be limited to brain, particularly the hypothalamus and pituitary.

Synonyms:

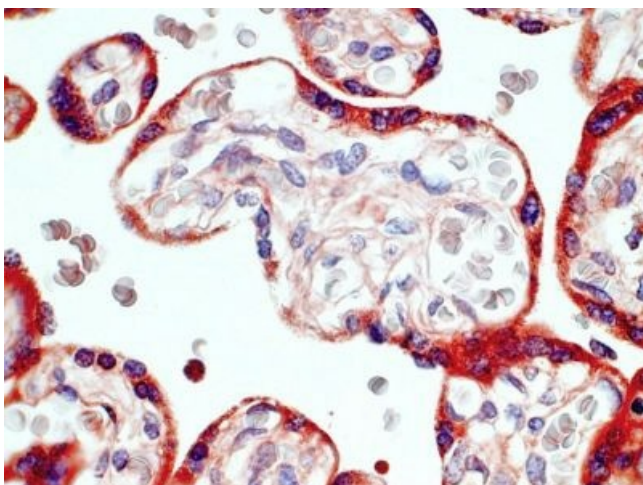
Melatonin-related receptor, G protein-coupled receptor 50, H9

Product images:

Immunohistochemistry on paraffin section:
Human pituitary stained with AM26725PU-N.



Immunohistochemistry on paraffin section:
Human kidney stained with AM26725PU-N.



Immunohistochemistry on paraffin section:
Human kidney stained with AM26725PU-N.