

Product datasheet for **AM26720PU-N**

CMKLR1 Mouse Monoclonal Antibody [Clone ID: 1A7]

Product data:

Product Type:	Primary Antibodies
Clone Name:	1A7
Applications:	IHC
Recommended Dilution:	Immunohistochemistry on Paraffin Sections: 1 µg/ml (1/200). Predigestion with proteinase K required.
Reactivity:	Human
Host:	Mouse
Isotype:	IgG2b
Clonality:	Monoclonal
Immunogen:	DNA vaccine
Specificity:	This antibody detects Chemerin receptor. The specificity of the antibody was verified by flowcytometry with cells expressing the recombinant protein.
Formulation:	Phosphate buffered saline pH 7.2 (PBS) State: Purified State: Lyophilized affinity purified Ig fraction Stabilizer: 5 mg/ml BSA Preservative: 0.1% Kathon
Reconstitution Method:	Restore by adding 0.5 ml distilled water
Concentration:	0.2 mg/ml (after reconstitution)
Purification:	Affinity Chromatography on Protein G
Conjugation:	Unconjugated
Storage:	Store lyophilized at 2-8°C for 6 month or at -20°C long term. After reconstitution store the antibody undiluted at 2-8°C for one month or (in aliquots) at -20°C long term. Avoid repeated freezing and thawing.
Stability:	Shelf life: one year from despatch.
Gene Name:	chemerin chemokine-like receptor 1



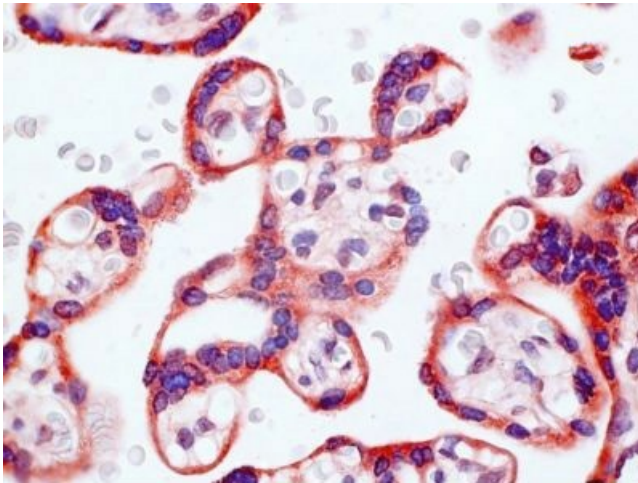
[View online »](#)

Database Link: [Entrez Gene 1240 Human Q99788](#)

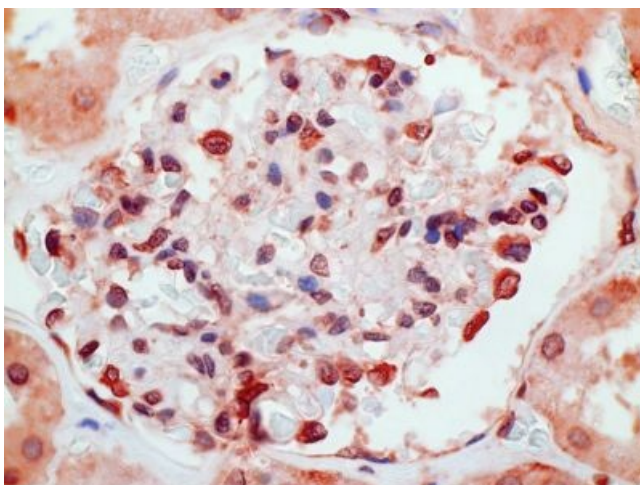
Background: G-protein coupled receptor ChemR23 is a 373 amino acid protein that belongs to the G - protein coupled receptor 1 family, with two potential glycosylation sites and one disulfide bond. The ligand Chemerin (or retinoic acid receptor responder protein 2 , RARRES2) is a 14 kDa protein found to stimulate chemotaxis of dendritic cells , monocytes / macrophages and natural killer cells to the site of inflammation. Accordingly, there is abundant expression of the receptor on these cells. ChemR23 is prominently expressed in developing osseous and cartilaginous tissue, as well as in tissues associated with hematopoietic and immune function including spleen, thymus, appendix, lymph node, bone marrow and fetal liver. The receptor is also found in adult parathyroid glands, in the cardiovascular system, brain, kidney, gastrointestinal and myeloid tissues and on endothelial cells. ChemR23 acts as a coreceptor for several SIV strains, as well as a primary HIV - 1 strain.

Synonyms: CMKLR1, CHEMR23, DEZ

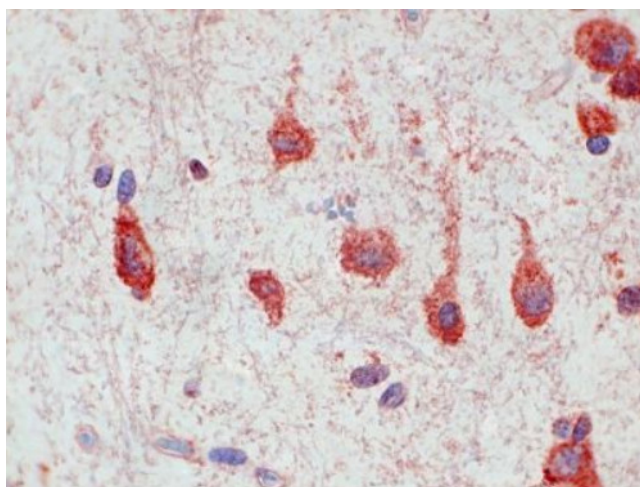
Product images:



Immunohistochemistry on paraffin sections:
AM26720PU-N on Swine brain cortex.



Immunohistochemistry on paraffin sections:
AM26720PU-N on Human placenta.



Immunohistochemistry on paraffin sections:
AM26720PU-N on Human kidney.