

Product datasheet for **AM26710RP-N**

ARHGEF4 (143-271) Mouse Monoclonal Antibody [Clone ID: ARHGEF-08]

Product data:

Product Type:	Primary Antibodies
Clone Name:	ARHGEF-08
Applications:	FC, WB
Recommended Dilution:	Flow Cytometry.
Reactivity:	Human
Host:	Mouse
Isotype:	IgG1
Clonality:	Monoclonal
Immunogen:	Recombinant fragment of human ARHGEF4 (amino acids 143-271)
Specificity:	This antibody recognizes Human intracellular protein ARHGEF4 / ASEF1, approx. 80 kDa guanine nucleotide exchange factor specific for Rac1 and Cdc42.
Formulation:	PBS Label: PE State: Liquid purified Ig fraction Stabilizer: 0.2% (w/v) high-grade protease free BSA Preservative: 15 mM Sodium Azide Label: Conjugated with R-Phycoerythrin (PE) under optimum conditions.
Concentration:	lot specific
Purification:	Size Exclusion Chromatography
Conjugation:	PE
Storage:	Store undiluted at 2-8°C. DO NOT FREEZE! This product is photosensitive and should be protected from light.
Stability:	Shelf life: one year from despatch.
Gene Name:	Rho guanine nucleotide exchange factor 4
Database Link:	Entrez Gene 50649 Human Q9NR80



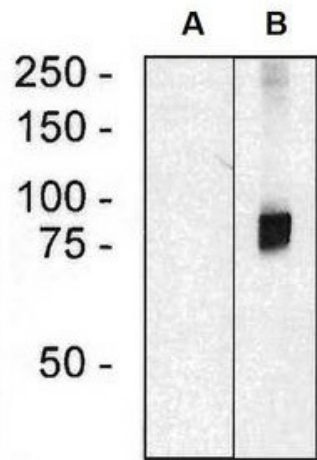
[View online »](#)

Background:

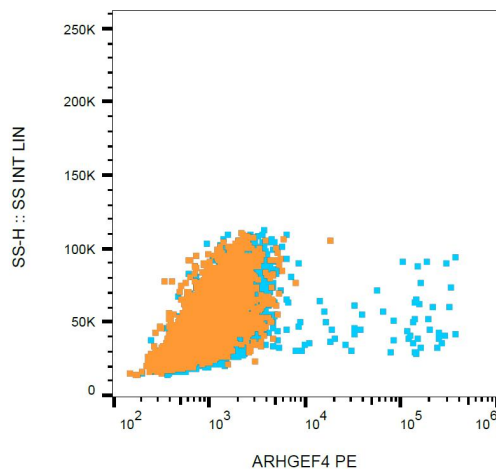
ARHGEF4 (Rho guanine nucleotide exchange factor 4), also known as ASEF 1 (adenomatous polyposis coli – stimulated guanine nucleotide exchange factor 1) is an approximately 80 kDa cytoplasmic protein important for growth factor-mediated regulation of cell morphology and migration. Besides N-terminal adenomatous polyposis coli (APC)-binding region (ABR) it contains Dbl homology (DH), Pleckstrin homology (PH) and SH3 domains. The SH3 domain inhibits GEF activity of ARHGEF4 by intramolecular interaction with the DH domain, whereas binding of APC stimulates the GEF activity. Activated ARHGEF4 stimulates the small GTPase Cdc42, which leads to decreased cell-cell adherence and enhanced cell migration.

Synonyms:

KIAA1112, ASEF

Product images:


Western blot analysis of ARHGEF4 in HEK293 cells (A) and HEK293-ARHGEF4 transfectants (B) using mouse monoclonal anti-ARHGEF4 (clone ARHGEF-08).



Intracellular staining of ARHGEF4 in transfected HEK-293 cells using mouse monoclonal anti-ARHGEF4 (clone ARHGEF-08) PE.