

## Product datasheet for **AM26708PU-N**

### HLA Class II DR Mouse Monoclonal Antibody [Clone ID: L243]

#### Product data:

Product Type:	Primary Antibodies
Clone Name:	L243
Applications:	FC, FN, IF, IHC, IP, WB
Recommended Dilution:	<b>Flow Cytometry.</b> <b>Immunoprecipitation.</b> <b>Western blot.</b> <b>Immunohistochemistry on Paraffin Sections.</b> <b>Immunohistochemistry on Frozen Sections.</b> <b>Immunocytochemistry.</b> <b>Functional Application:</b> blocking.
Reactivity:	Canine, Human, Primate
Host:	Mouse
Isotype:	IgG2a
Clonality:	Monoclonal
Immunogen:	Human B lymphocytes
Specificity:	This antibody recognizes specifically HLA-DR molecules, both peptide-loaded and empty.
Formulation:	PBS, pH~7.4 State: Purified State: Liquid purified IgG fraction (> 95% by SDS-PAGE) Preservative: 15 mM Sodium Azide
Concentration:	lot specific
Purification:	Affinity Chromatography on Protein A
Conjugation:	Unconjugated
Storage:	Store undiluted at 2-8°C. <b>DO NOT FREEZE!</b>
Stability:	Shelf life: one year from despatch.



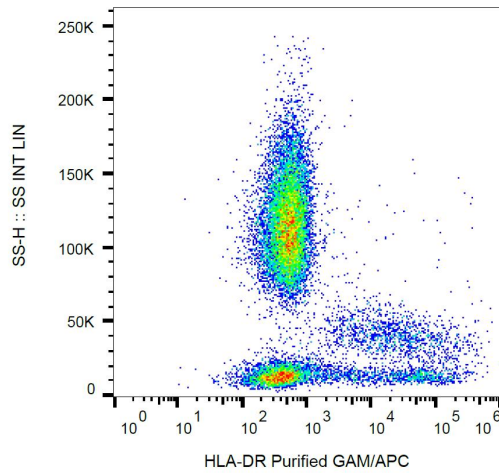
[View online »](#)

**Background:**

HLA-DR, a member of MHC class II glycoproteins, that bind intracellularly processed peptides and present them to the Th cells, is composed of 36 kDa alpha chain and 27 kDa beta chain, both anchored in the plasma membrane. Together with other MHC II molecules HLA-DR plays a central role in the immune system. It is expressed on antigen-presenting cells (dendritic cells, B lymphocytes, monocytes, macrophages).

**Synonyms:**

HLA-DR, HLA class II histocompatibility antigen DR, MHC class II antigen DR

**Product images:**

Surface staining of HLA-DR in human peripheral blood with anti-HLA-DR (L243) purified / GAM-APC.